

# Brazil | Severe weather, floods and EU response



**Rainfall accumulation (mm)**  
**28 Apr – 14 May**  
 Source: NASA GPM

- 50-250
- 251-500
- 501-1 000
- > 1 000

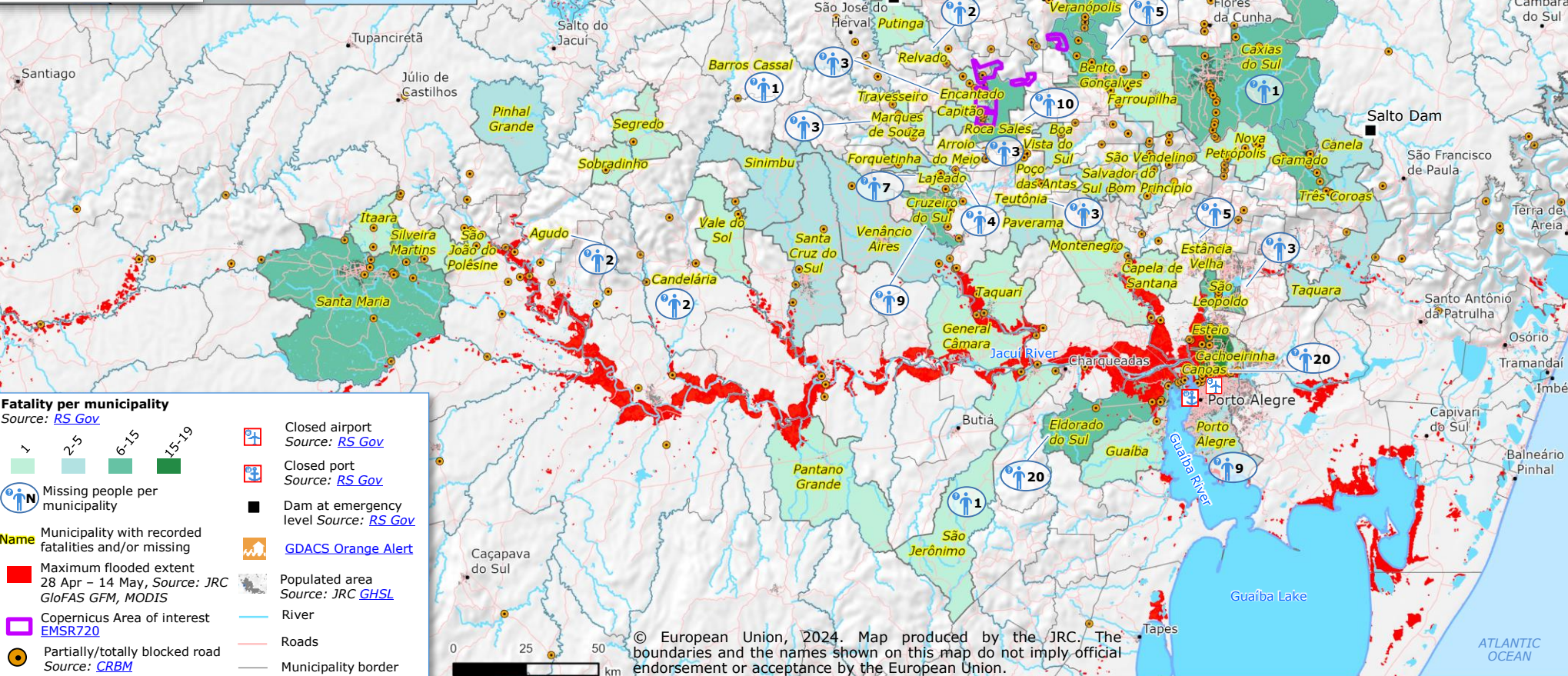
Country boundary  
 State border

**EU RESPONSE**  
 SOURCE: DG ECHO

**EUR 1 200 000**  
 Emergency funding  
 (ALERT and DREF)  
[More info](#)

**IMPACT OVERVIEW**  
 As of 14 May  
 Source: [Rio Grande do Sul Government \(RS Gov\)](#)

	<b>149</b> Fatalities		<b>2 124 553</b> Affected people
	<b>112</b> Missing people		<b>538 245</b> Displaced people
	<b>806</b> Injured people		<b>79 494</b> Sheltered people



**Fatality per municipality**  
 Source: [RS Gov](#)

	0
	1-5
	6-15
	15-19

Missing people per municipality

**Name** Municipality with recorded fatalities and/or missing

- Maximum flooded extent 28 Apr – 14 May, Source: [JRC GloFAS GFM, MODIS](#)
- Copernicus Area of Interest [EMSR720](#)
- Partially/totally blocked road Source: [CRBM](#)
- Closed airport Source: [RS Gov](#)
- Closed port Source: [RS Gov](#)
- Dam at emergency level Source: [RS Gov](#)
- [GDACS Orange Alert](#)
- Populated area Source: [JRC GHSL](#)
- River
- Roads
- Municipality border