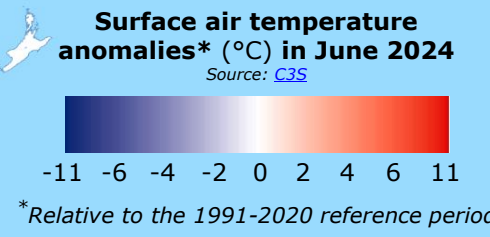
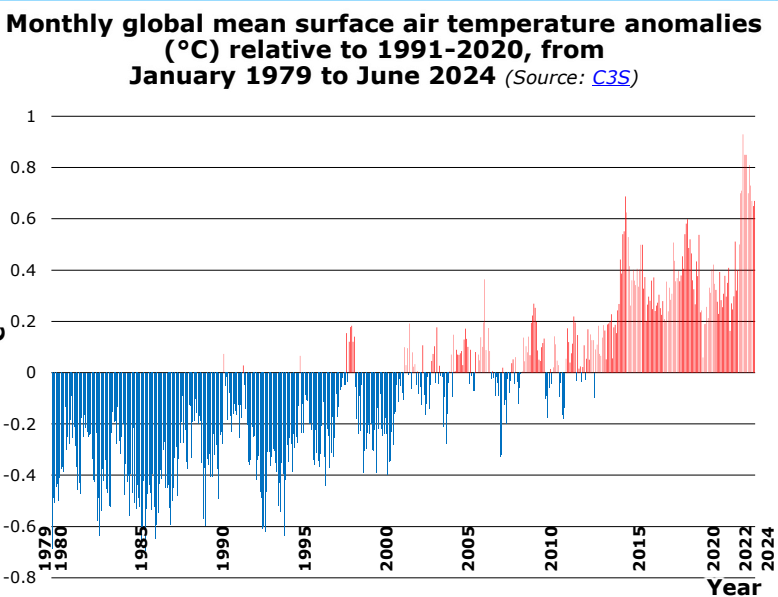
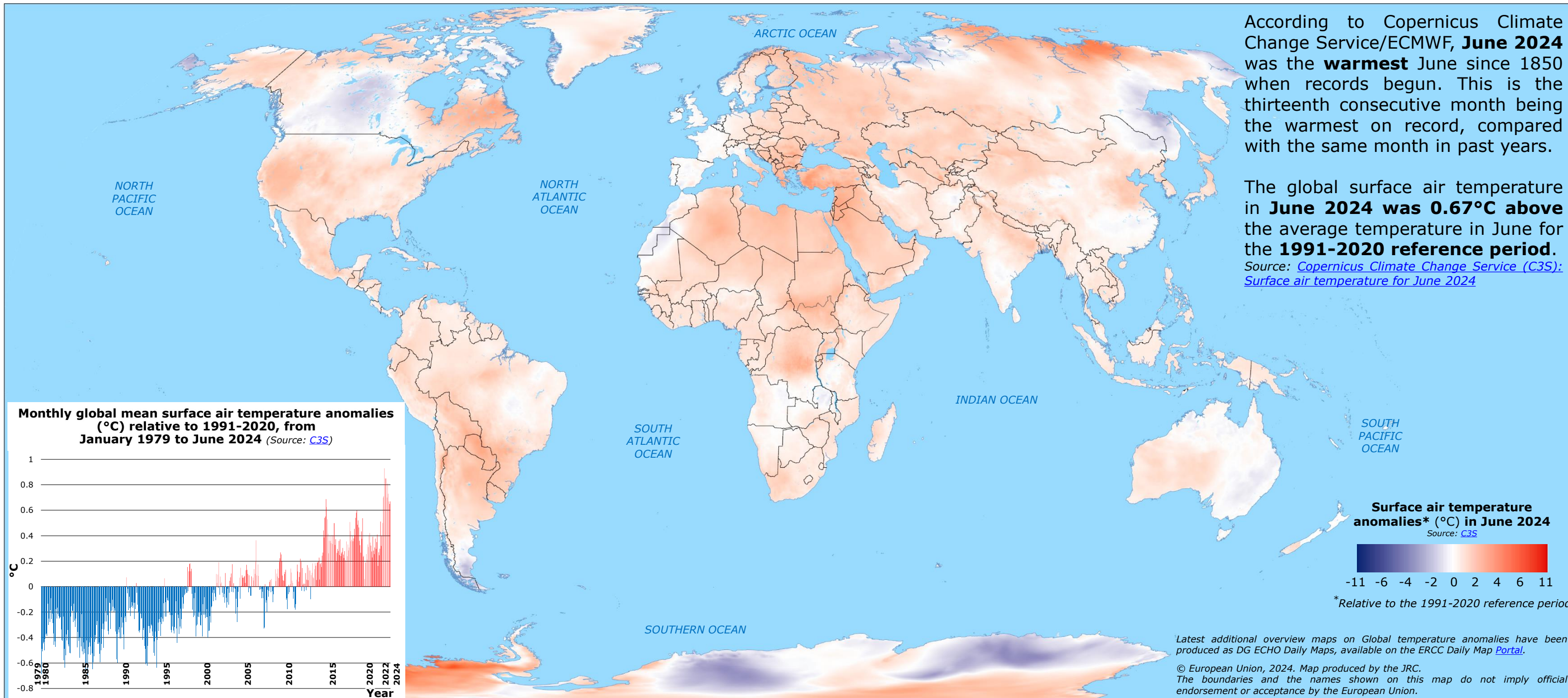


World | Temperature anomalies in June 2024

According to Copernicus Climate Change Service/ECMWF, **June 2024** was the **warmest** June since 1850 when records begun. This is the thirteenth consecutive month being the warmest on record, compared with the same month in past years.

The global surface air temperature in **June 2024** was **0.67°C above** the average temperature in June for the **1991-2020 reference period**.

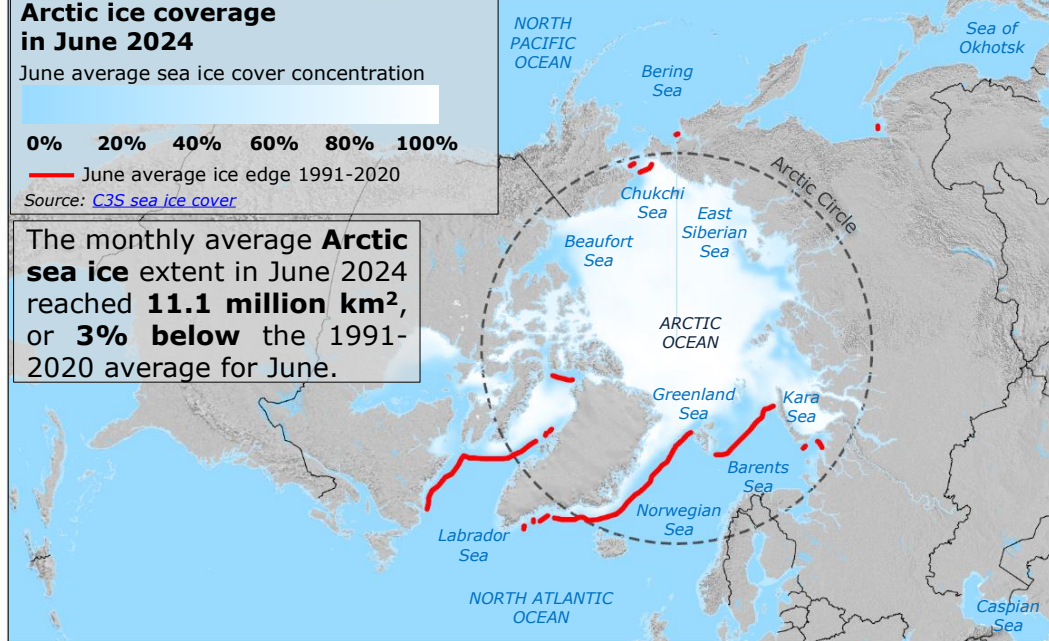
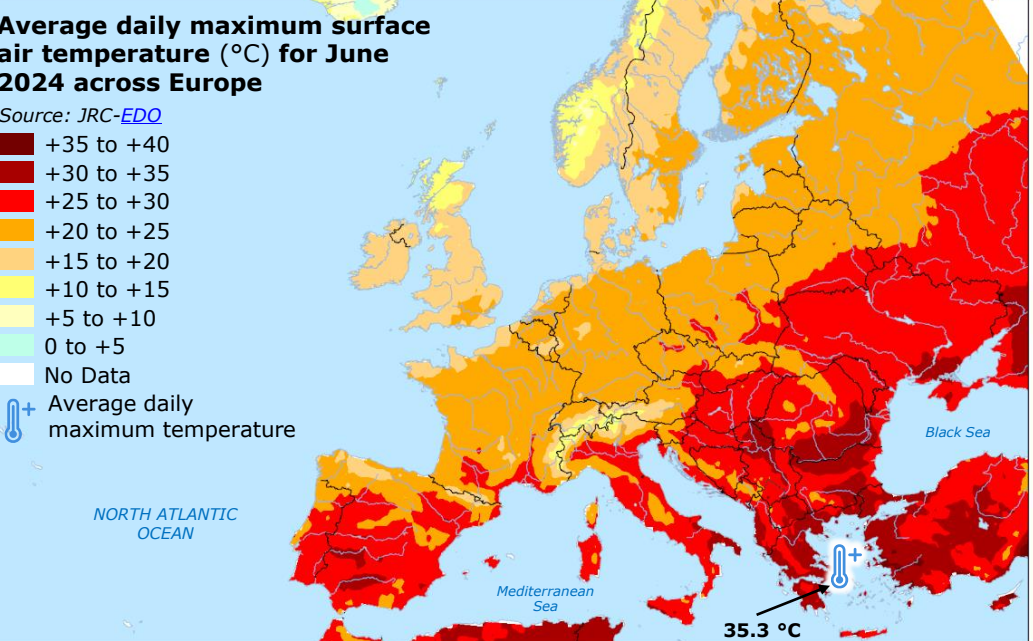
Source: [Copernicus Climate Change Service \(C3S\): Surface air temperature for June 2024](#)



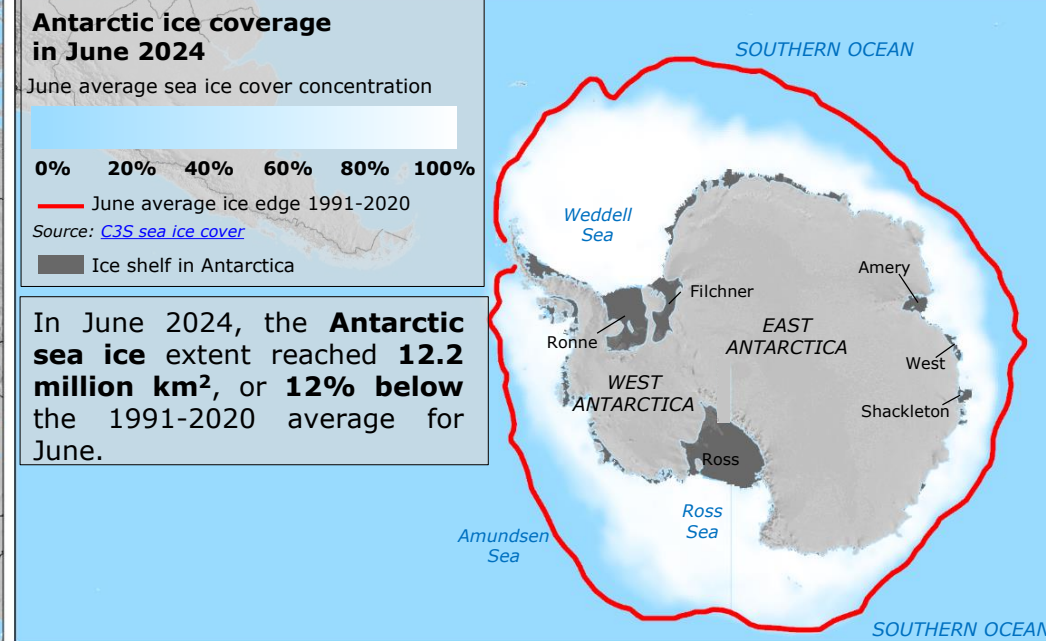
*Relative to the 1991-2020 reference period

Latest additional overview maps on Global temperature anomalies have been produced as DG ECHO Daily Maps, available on the ERCC Daily Map [Portal](#).

© European Union, 2024. Map produced by the JRC.
The boundaries and the names shown on this map do not imply official endorsement or acceptance by the European Union.



The monthly average **Arctic sea ice** extent in June 2024 reached **11.1 million km²**, or **3% below** the 1991-2020 average for June.



In June 2024, the **Antarctic sea ice** extent reached **12.2 million km²**, or **12% below** the 1991-2020 average for June.