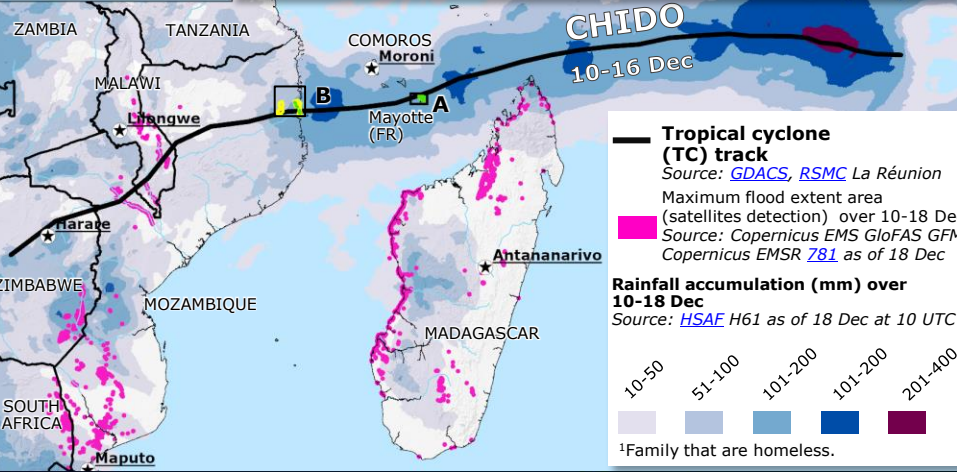


# Southeast Africa | Tropical cyclone CHIDO, EU and UCPM response



IMPACT OVERVIEW				
as of 20 Dec, Source: <a href="#">DG ECHO</a> , <a href="#">INGD</a> , <a href="#">ACTED</a> , <a href="#">WFP</a>				
	Fatalities	Injured people	Displaced people	Affected people
Mayotte	31	~2 000	~100 000	n/a
Mozambique	73	543	65 282 <sup>1</sup>	329 510
Malawi	13	29	227	44 162
Comoros	n/a	5	140	64 167
Madagascar	n/a	n/a	n/a	19 000



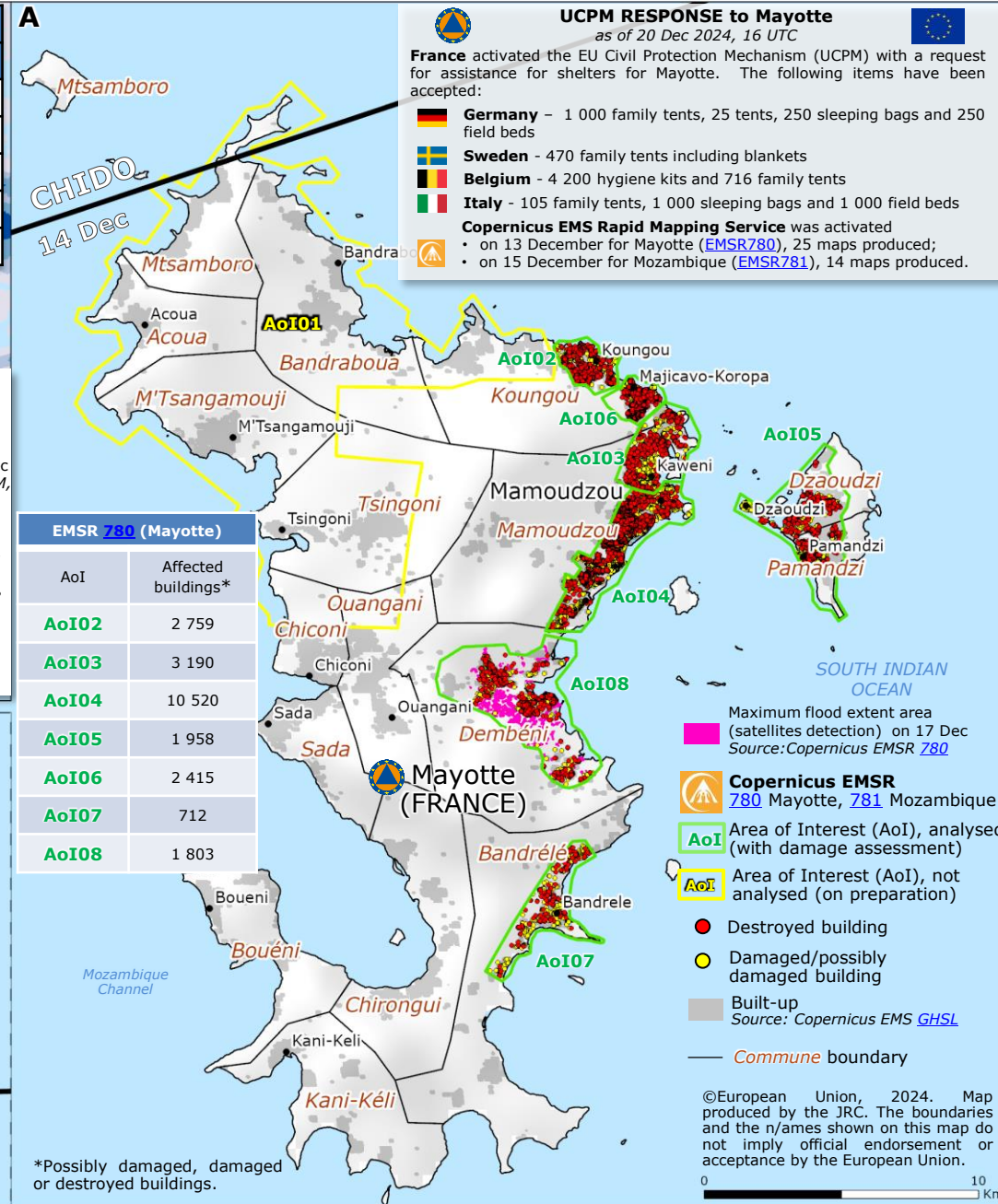
**EU RESPONSE to MOZAMBIQUE**  
as of 20 Dec 2024, 16 UTC

**EUR 900 000** emergency humanitarian funding.

Emergency Humanitarian Response capacity (EHRC) to transport around **60 tonnes** of shelter, planned through **5 Humanitarian Aid Bridge flights**.



EMSR 781 (MOZAMBIQUE)	
AoI	Affected buildings*
AoI03	428
AoI04	7 848
AoI05	8 669
AoI06	12 166



**UCPM RESPONSE to Mayotte**  
as of 20 Dec 2024, 16 UTC

France activated the EU Civil Protection Mechanism (UCPM) with a request for assistance for shelters for Mayotte. The following items have been accepted:

- Germany** – 1 000 family tents, 25 tents, 250 sleeping bags and 250 field beds
- Sweden** – 470 family tents including blankets
- Belgium** – 4 200 hygiene kits and 716 family tents
- Italy** – 105 family tents, 1 000 sleeping bags and 1 000 field beds

**Copernicus EMS Rapid Mapping Service** was activated

- on 13 December for Mayotte ([EMSR780](#)), 25 maps produced;
- on 15 December for Mozambique ([EMSR781](#)), 14 maps produced.

EMSR 780 (Mayotte)	
AoI	Affected buildings*
AoI02	2 759
AoI03	3 190
AoI04	10 520
AoI05	1 958
AoI06	2 415
AoI07	712
AoI08	1 803

Maximum flood extent area (satellites detection) on 17 Dec  
Source: Copernicus EMSR 780

**Copernicus EMSR 780** Mayotte, **781** Mozambique

**AoI** Area of Interest (AoI), analysed (with damage assessment)

**AoI** Area of Interest (AoI), not analysed (on preparation)

- Destroyed building
- Damaged/possibly damaged building
- Built-up

Source: Copernicus EMS [GHSL](#)

Commune boundary

©European Union, 2024. Map produced by the JRC. The boundaries and the names shown on this map do not imply official endorsement or acceptance by the European Union.

\*Possibly damaged, damaged or destroyed buildings.