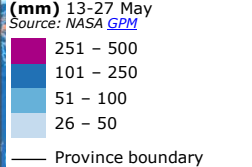
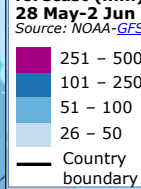


Papua New Guinea | Landslide

Precipitation accumulation (mm) 13-27 May



Precipitation forecast (mm) 28 May-2 Jun



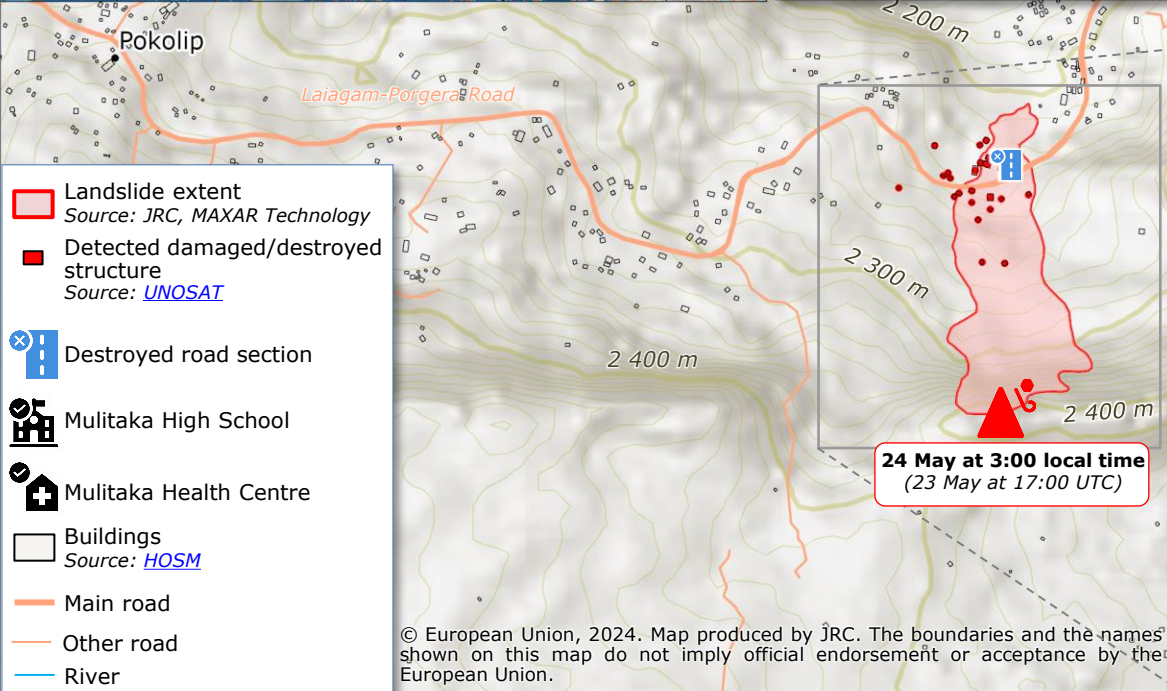
IMPACT OVERVIEW

as of 28 May
Source: [UN News](#), [UNOSAT](#), [IOM](#)

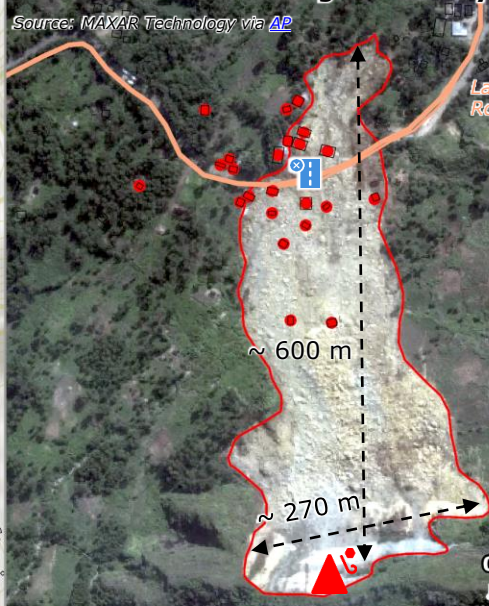
- 6** Confirmed fatalities (Source: [IOM](#))
- ~ 670** Unconfirmed fatalities
- 1 650** Displaced people
- 7 840** Affected people
- 18** Confirmed damaged structures (Source: [IOM](#))
- 150** Estimated damaged/destroyed structures
- 1** Destroyed road
- ~ 9 ha** Landslide extent

PAPUA NEW GUINEA

Enga Province



Landslide satellite image of 27 May



24 May at 3:00 local time
(23 May at 17:00 UTC)

- Landslide extent
Source: [JRC](#), [MAXAR Technology](#)
- Detected damaged/destroyed structure
Source: [UNOSAT](#)
- Destroyed road section
- Mulitaka High School
- Mulitaka Health Centre
- Buildings
Source: [HOSM](#)
- Main road
- Other road
- River