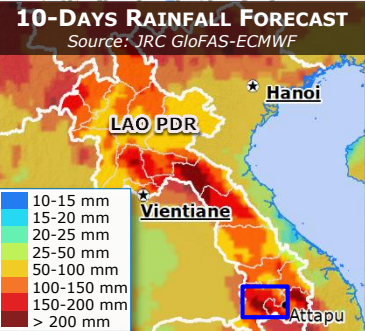
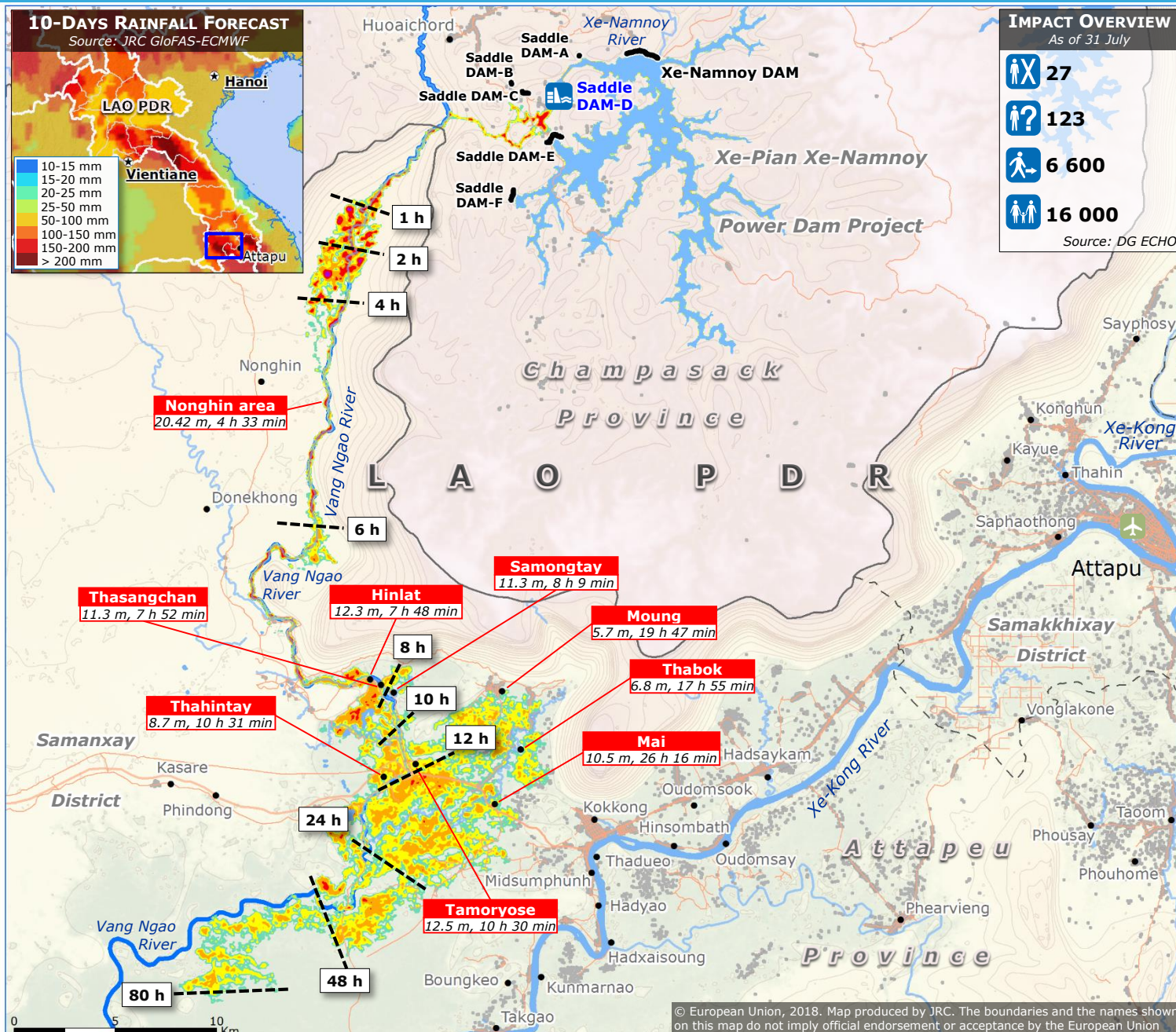


Lao PDR | Dam collapse – Numerical modelling of the flood wave



IMPACT OVERVIEW

As of 31 July

- 27 (Icon: Person with X)
- 123 (Icon: Person with question mark)
- 6 600 (Icon: Person with arrow)
- 16 000 (Icon: Group of people)

Source: DG ECHO

JRC Calculations

Maximum Inundation Depth

- > 20 m (Purple)
- 10-20 m (Red)
- 5-10 m (Orange)
- 2-5 m (Yellow)
- 0.2-2 m (Light Green)

Location Analysed

Inundation Depth (m), Arrival Time

- Estimated arrival time (Dashed line with 'h')
- Settlement (Grey area)

- Collapsed dam section (Icon: Dam with X)
- Dam section (Icon: Dam)
- Fatalities (Icon: Person with X)
- Missing people (Icon: Person with question mark)
- Displaced people (Icon: Person with arrow)
- Affected people (Icon: Group of people)
- Airport (Icon: Airplane)

After the collapse on 23 July of the Saddle Dam-D section of the Xepian-Xe Nam Noy hydropower dam, the death toll reached 27 people. The dam break analysis, performed by JRC and shown in the main map, has identified the areas mostly affected and the extent is in good agreement with the analysis performed by UNOSAT using radar satellite data. The JRC analysis has shown that the most affected locations have been hit after about 7 h from the break, with an estimated water height of about 5-10 m. Source: JRC

