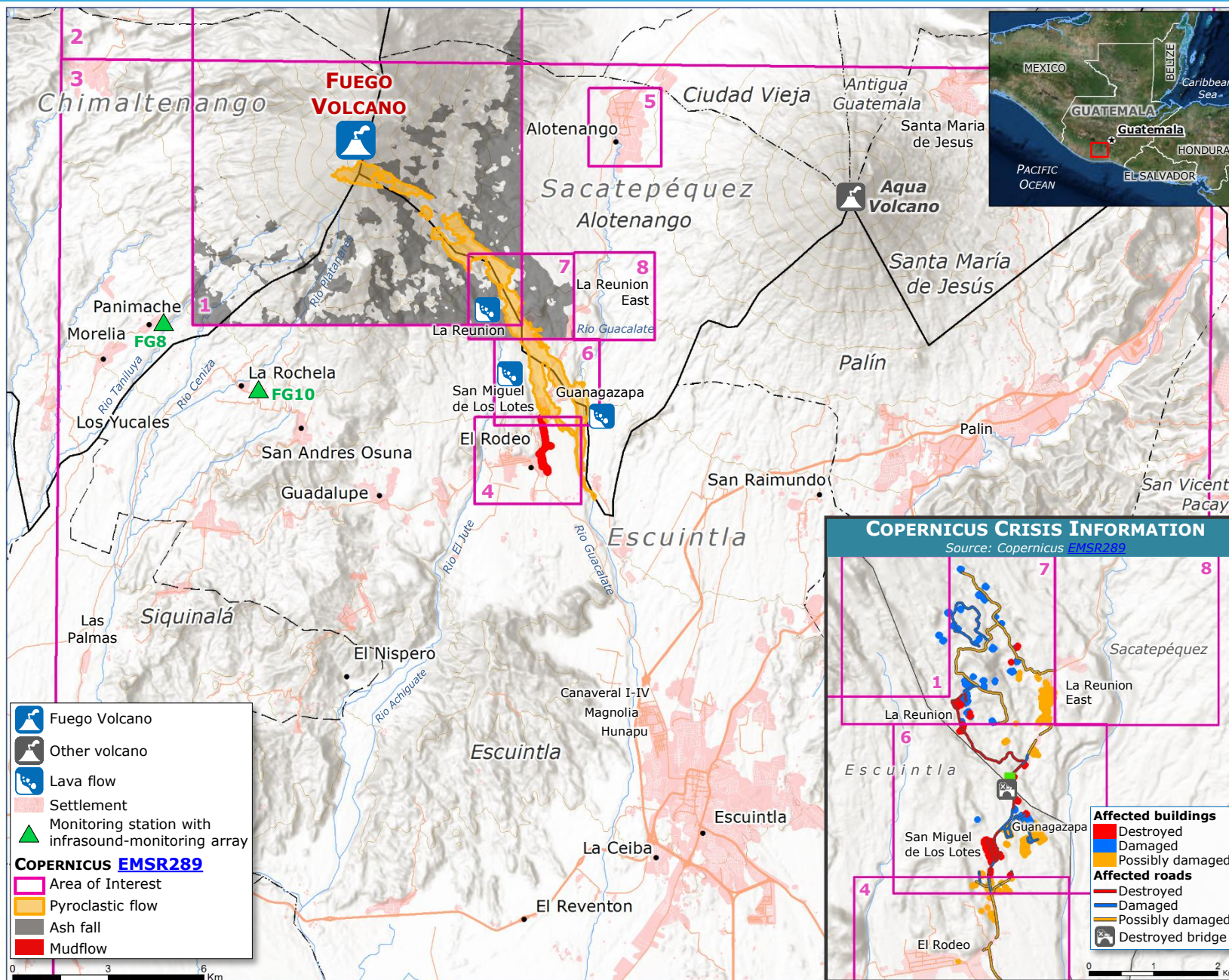


# Guatemala | Fuego Volcano Eruption Aftermath

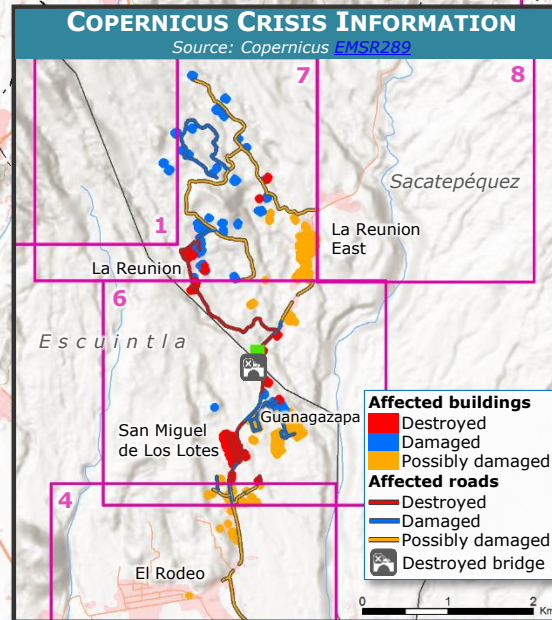


## IMPACT OVERVIEW as of 1 August

Source: CONRED, DG ECHO

- 113** Fatalities
- 27** Injured people
- 12 823** Evacuated people
- 1 714 317** Affected people
- 186** Destroyed houses
- 1** Destroyed school and **3** damaged

- On 3 June 2018, a strong eruption of Fuego volcano produced a dense volcanic ash cloud rising up to 10 km high. Following the collapse of the volcanic column, pyroclastic flows and descending lahars caused significant damage and a high number of fatalities around the mountain.
- After the eruption from 3 June, the volcano's activity remains hazardous. While the risk of another similar eruption is estimated as very low, the probability of lahars coming down the mountain is considered as very high.
- On 15 June, the Guatemalan authorities requested assistance from the EUCPM, asking for technical support on early warning systems, volcanology and disaster risk management.



## EU CIVIL PROTECTION MECHANISM (EUCPM)

### MISSION 1 (23 June - 14 July)

- 2** ERCC Liaison Officers
- Main activities:
    - report about current Early Warning Systems in the country
    - recommendations in order to further strengthen Guatemala's capacity to monitor and react on volcanic activity
- 7** Technical Experts
- Contribution to the post-needs assessment

### MISSION 2 (22 – 30 July)

- 1** ERCC Liaison Officer
- Main activities:
    - Installation of two infrasound-monitoring arrays on existing seismic stations, donated by Italy, University of Firenze (FG8 and FG10)
- 4** Technical Experts
- training to the INSIVUMEH staff on the arrays
  - organization of logistics and contacts with local partners
  - liaison with DG ECHO field experts/EU Delegation on site