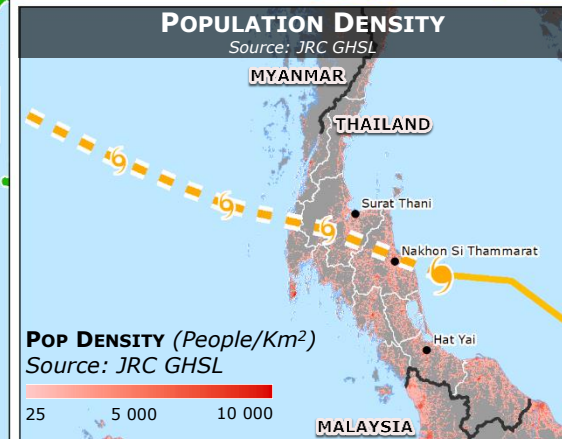
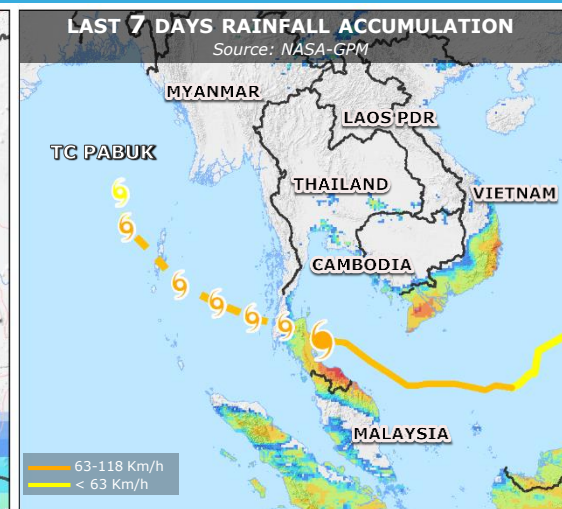
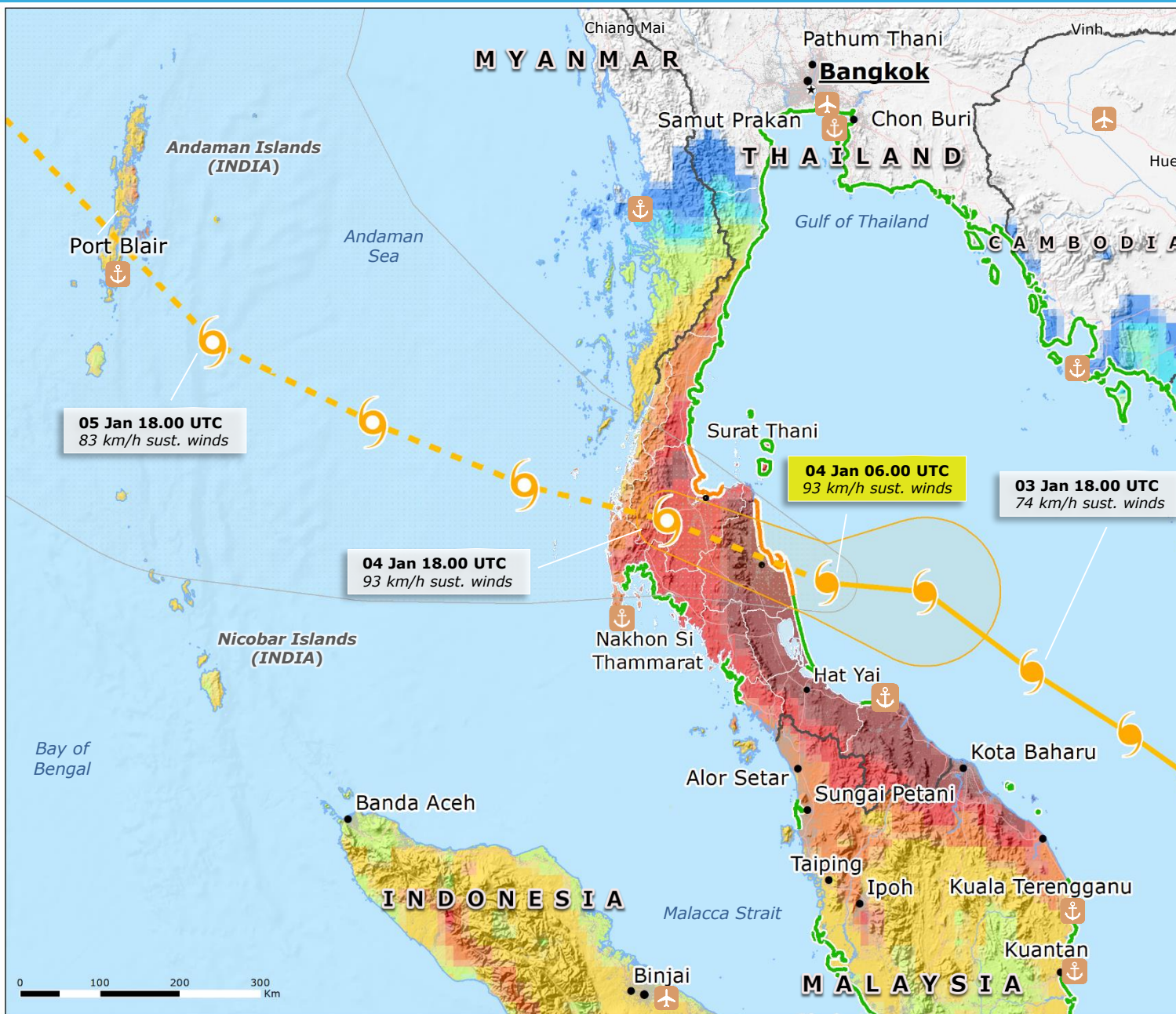


Thailand, Malaysia, Myanmar, India | Tropical Cyclone PABUK



TROPICAL CYCLONE FORECAST
Source: JRC GloFAS-ECMWF

- Observed position
- Forecast position

INTENSITY

- < 63 Km/h
- 63 - 118 Km/h

Uncertainty Cone

WIND BUFFER

- 93-118 km/h

10-DAYS RAINFALL FORECAST
Source: JRC GloFAS-ECMWF

- 10-15 mm
- 15-20 mm
- 20-25 mm
- 25-50 mm
- 50-100 mm
- 100-150 mm
- 150-200 mm
- > 200 mm

STORM SURGE
JRC Calculations, Atmospheric ECMWF

- 1 - 1.6 m
- 0.2 - 1 m

Port Airport

Source: GDACS, JRC, GHSL, JTWC, UNHCR