

Mozambique, Zimbabwe | Tropical Cyclone IDAI Impact Overview

EU Response
 The European Commission allocated an emergency aid package of €3.5 million on 19 March. The funding will be used to provide logistical support to reach affected people, emergency shelters, hygiene, sanitation and health care. Out of the aid package, based on needs, €2 million will be provided in Mozambique, €1 million in Malawi and €0.5 million in Zimbabwe.

MOZAMBIQUE

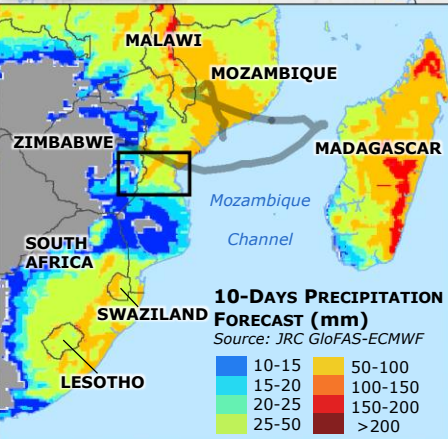
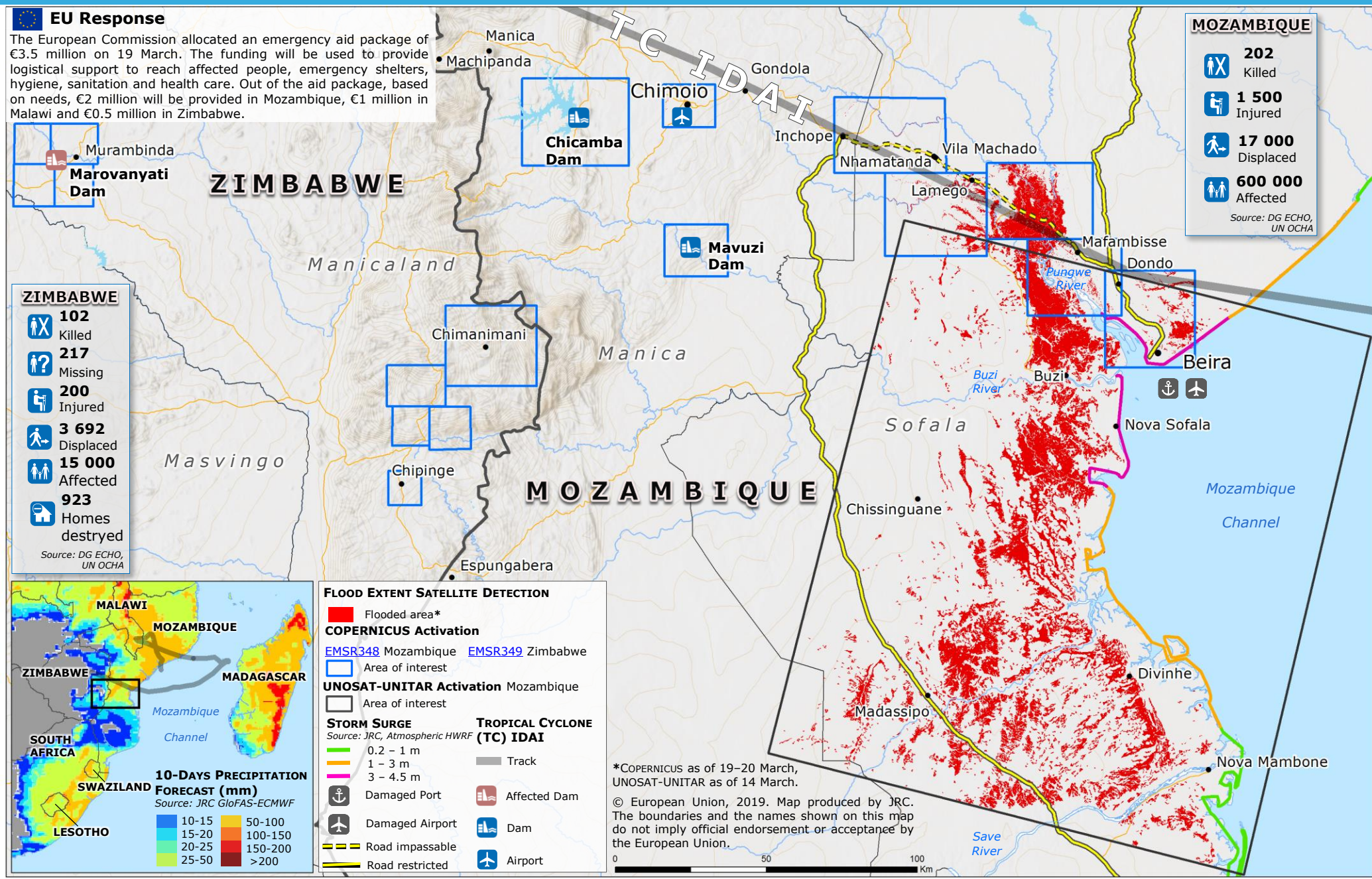
- 202** Killed
- 1 500** Injured
- 17 000** Displaced
- 600 000** Affected

Source: DG ECHO, UN OCHA

ZIMBABWE

- 102** Killed
- 217** Missing
- 200** Injured
- 3 692** Displaced
- 15 000** Affected
- 923** Homes destroyed

Source: DG ECHO, UN OCHA



FLOOD EXTENT SATELLITE DETECTION

- Flooded area*

COPERNICUS Activation

- EMSR348 Mozambique EMSR349 Zimbabwe
- Area of interest

UNOSAT-UNITAR Activation Mozambique

- Area of interest

STORM SURGE
Source: JRC, Atmospheric HWRF

- 0.2 – 1 m
- 1 – 3 m
- 3 – 4.5 m

TROPICAL CYCLONE (TC) IDAI

- Track
- Damaged Port
- Damaged Airport
- Road impassable
- Road restricted
- Affected Dam
- Dam
- Airport

*COPERNICUS as of 19–20 March, UNOSAT-UNITAR as of 14 March.
 © European Union, 2019. Map produced by JRC. The boundaries and the names shown on this map do not imply official endorsement or acceptance by the European Union.