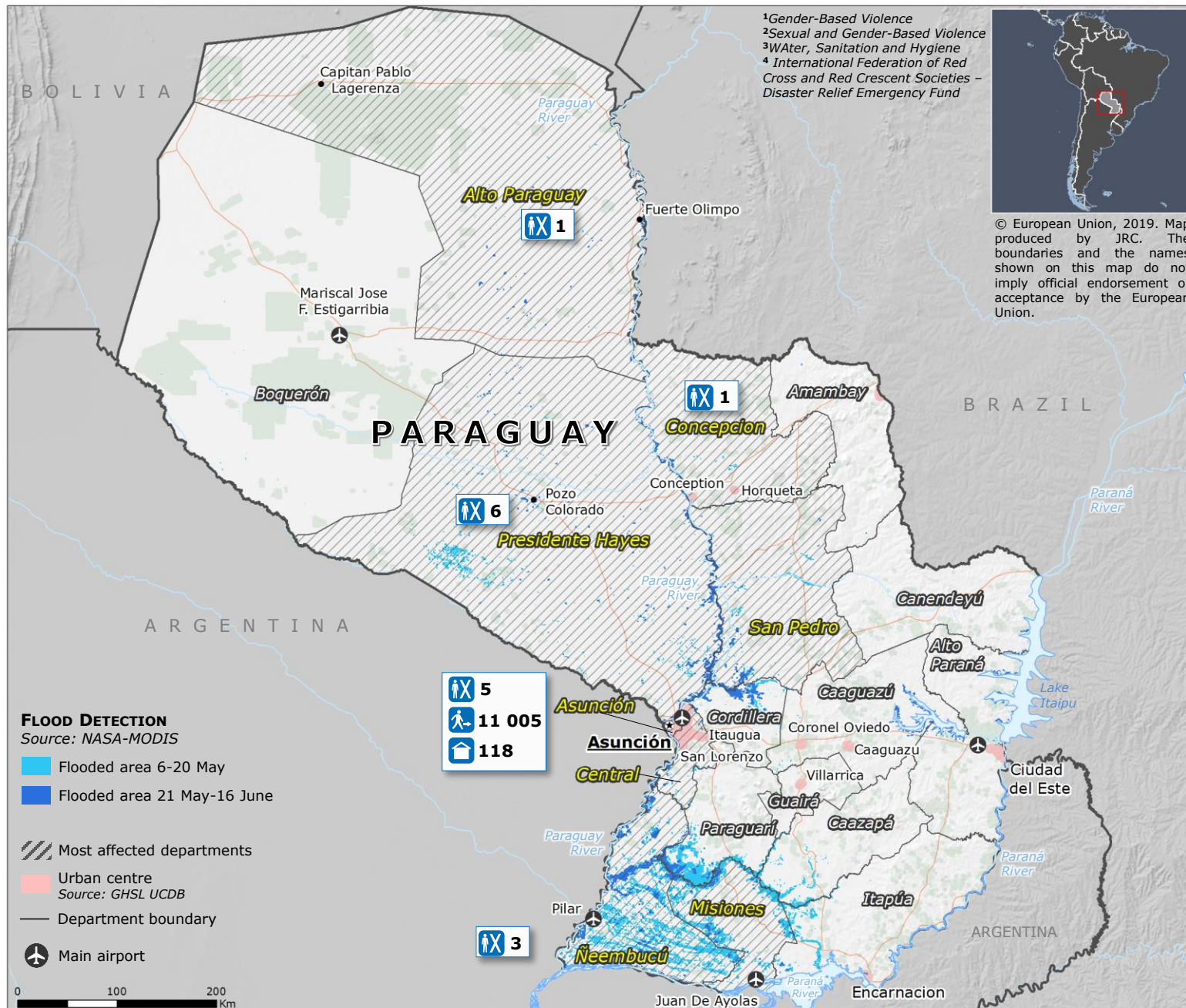


Paraguay | Floods



Impact Overview

- 16** Fatalities
- 19 500** Evacuated families
- 118** Shelters
- 69 534** Affected families
- 347** Damaged schools

Source: DG ECHO

Needs by sector and response

- Protection**
GBV¹ and SGBV² cases detected among the displaced people
- Health**
42 047 families severely affected
16 390 health services provided
- Education in Emergencies**
28 665 students at risk of permanently classes interruption
117 mobile classrooms settled
- WASH³**
300 hygiene Kits delivered by Plan International
- EUR 200 000** provided by DG ECHO to the IFRC DREF⁴

Source: DG ECHO

