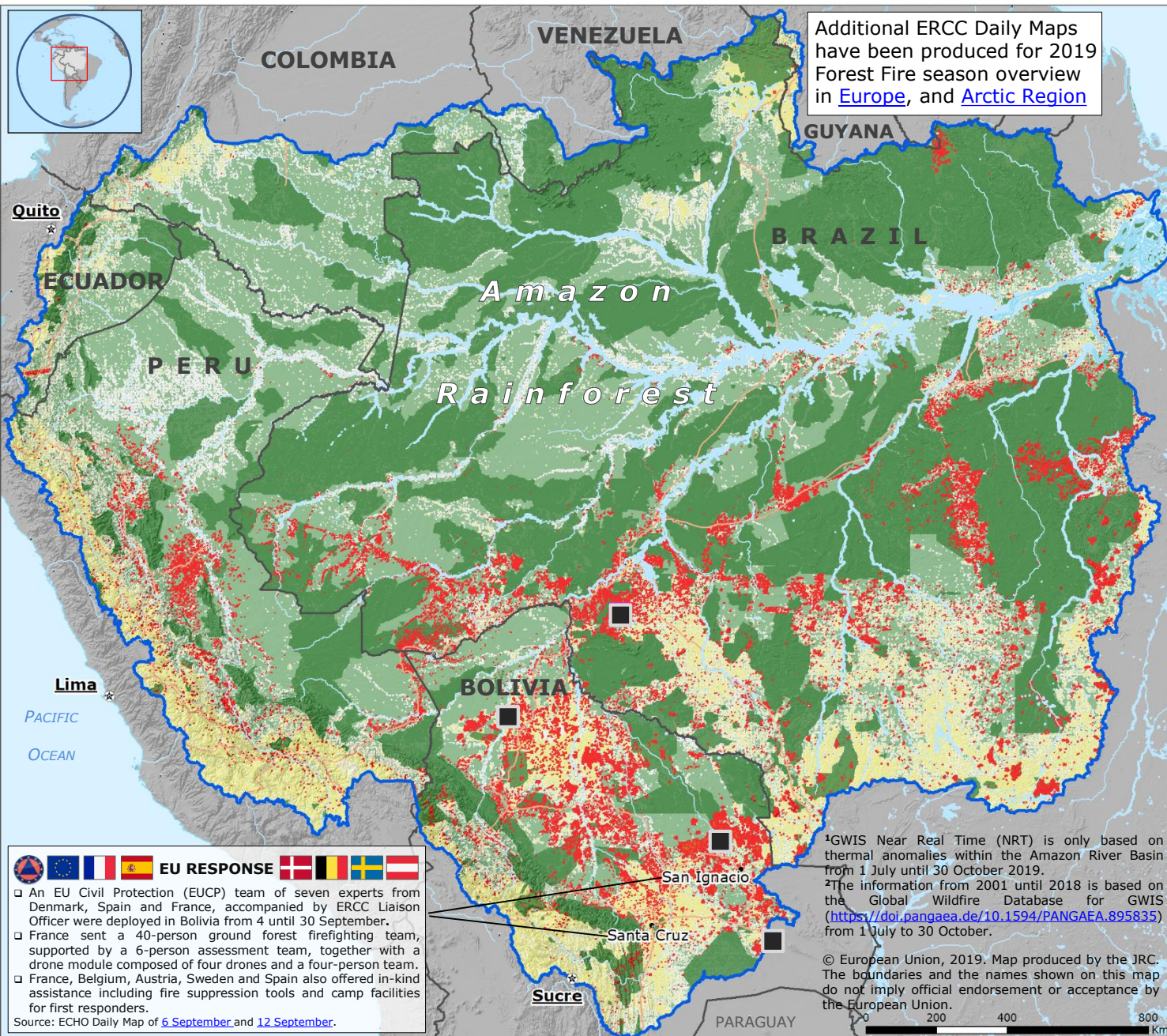


# Amazon River Basin | Fires from July to October 2019



Additional ERCC Daily Maps have been produced for 2019 Forest Fire season overview in [Europe](#), and [Arctic Region](#)

## JRC GLOBAL WILDFIRE INFORMATION SYSTEM (GWIS) NEAR REAL TIME<sup>1</sup> DETECTION

**■** Burnt areas from 1 July to 30 Oct

**COPERNICUS EMSR383, EMSR387**

**■** Area of Interest localization

**—** Amazon River Basin Boundary

**■** Protected areas

**■** Forests

**■** Cropland/Shrubland

**—** Country border

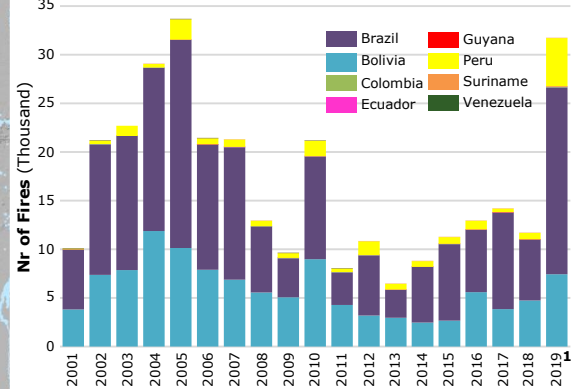
Source: [SO HYBAM](#)

Sources: [UNEP-WCMC](#), [Protected Planet](#)

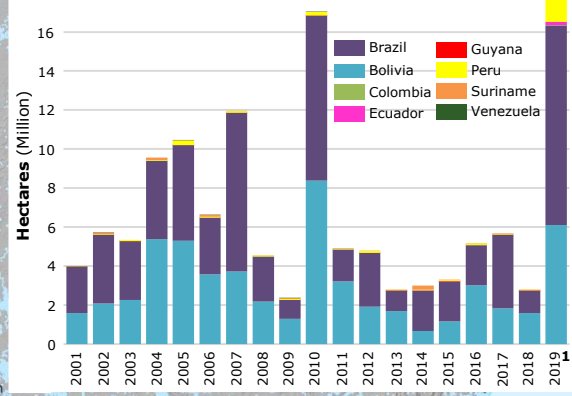
Source: [FAO](#)

Source: [FAO](#)

## NUMBER OF FIRES WITHIN AMAZON RIVER BASIN PER COUNTRY



## BURNT AREAS<sup>2</sup> WITHIN AMAZON RIVER BASIN PER COUNTRY



**EU RESPONSE**

- An EU Civil Protection (EUCP) team of seven experts from Denmark, Spain and France, accompanied by ERCC Liaison Officer were deployed in Bolivia from 4 until 30 September.
- France sent a 40-person ground forest firefighting team, supported by a 6-person assessment team, together with a drone module composed of four drones and a four-person team.
- France, Belgium, Austria, Sweden and Spain also offered in-kind assistance including fire suppression tools and camp facilities for first responders.

Source: ECHO Daily Map of [6 September](#) and [12 September](#).

<sup>1</sup>GWIS Near Real Time (NRT) is only based on thermal anomalies within the Amazon River Basin from 1 July until 30 October 2019.

<sup>2</sup>The information from 2001 until 2018 is based on the Global Wildfire Database for GWIS (<https://doi.pangaea.de/10.1594/PANGAEA.895835>) from 1 July to 30 October.