

Croatia | Earthquake of 22 March-UCPM Response



Impact Overview

- 18** Injured people
- 67** Damaged buildings

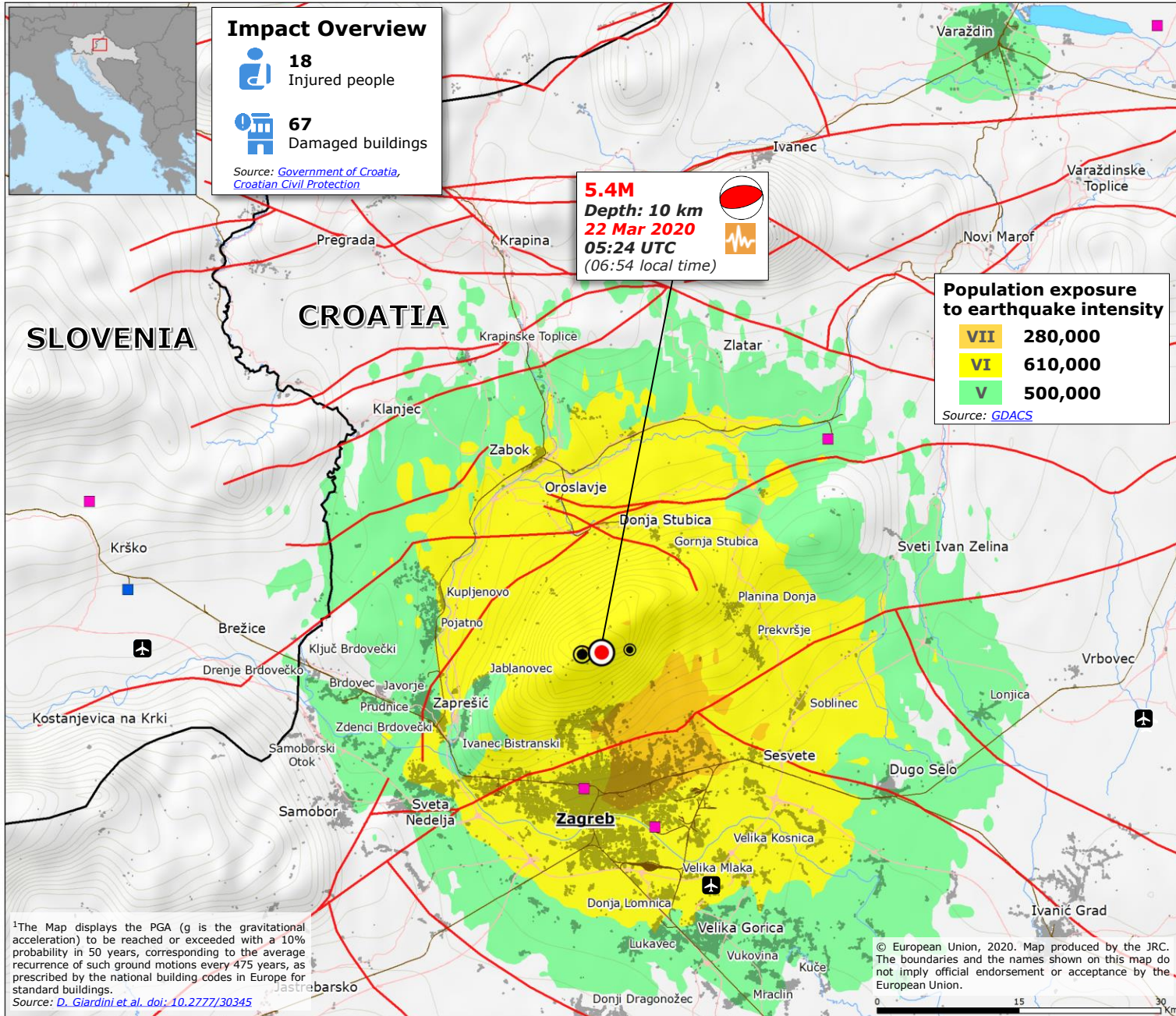
Source: [Government of Croatia, Croatian Civil Protection](#)

5.4M
Depth: 10 km
22 Mar 2020
05:24 UTC
 (06:54 local time)

Population exposure to earthquake intensity

VII	280,000
VI	610,000
V	500,000

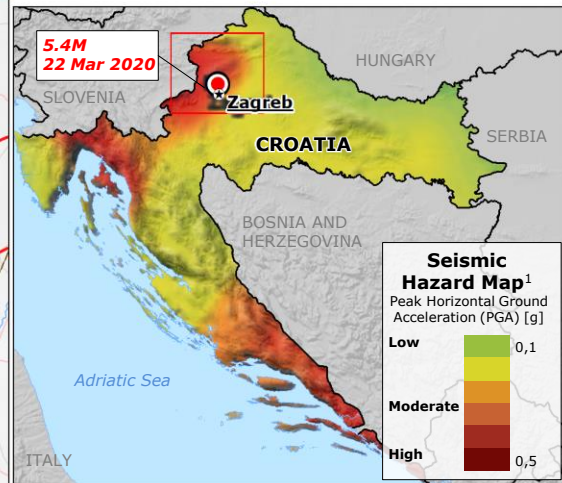
Source: [GDACS](#)



EU RESPONSE

On 22 March, the **European Union Civil Protection Mechanism (UCPM)** was activated, offering in kind assistance: Shelter material (tents, foldable beds, mattresses, blankets, sleeping bags), electric heaters, lighting equipment.

Assistance received from AT, HU, IT, LT, ME, SI, FR.



Earthquake

Source: [GDACS, USGS](#)

- Main event
- Aftershocks 3.4M - 4.6M
- Focal mechanism Source: [USGS](#)

Modified Mercalli Scale

Source: [USGS](#)

- VII** Very strong shaking
- VI** Strong shaking
- V** Moderate shaking

Legend

- [GDACS](#) Orange alert
- Active fault Source: [Stanko D. et al 2019](#)
- Power plant
- Nuclear power plant
- Built-up
- Roads
- Railways
- Country border
- Main airport

¹The Map displays the PGA (g is the gravitational acceleration) to be reached or exceeded with a 10% probability in 50 years, corresponding to the average recurrence of such ground motions every 475 years, as prescribed by the national building codes in Europe for standard buildings.
 Source: [D. Giardini et al. doi: 10.2277/30345](#)