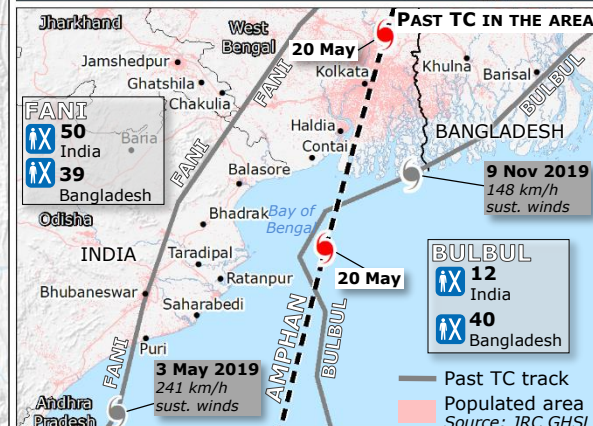
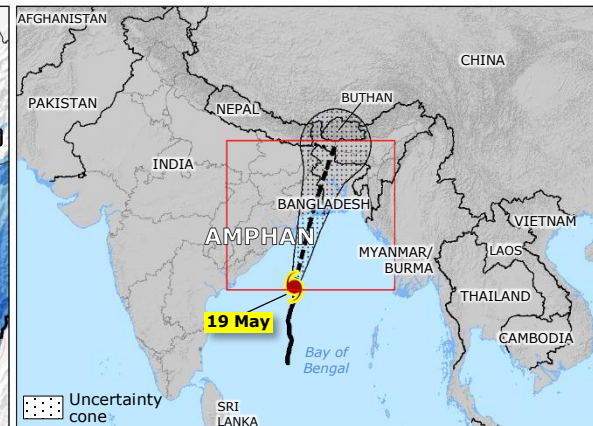
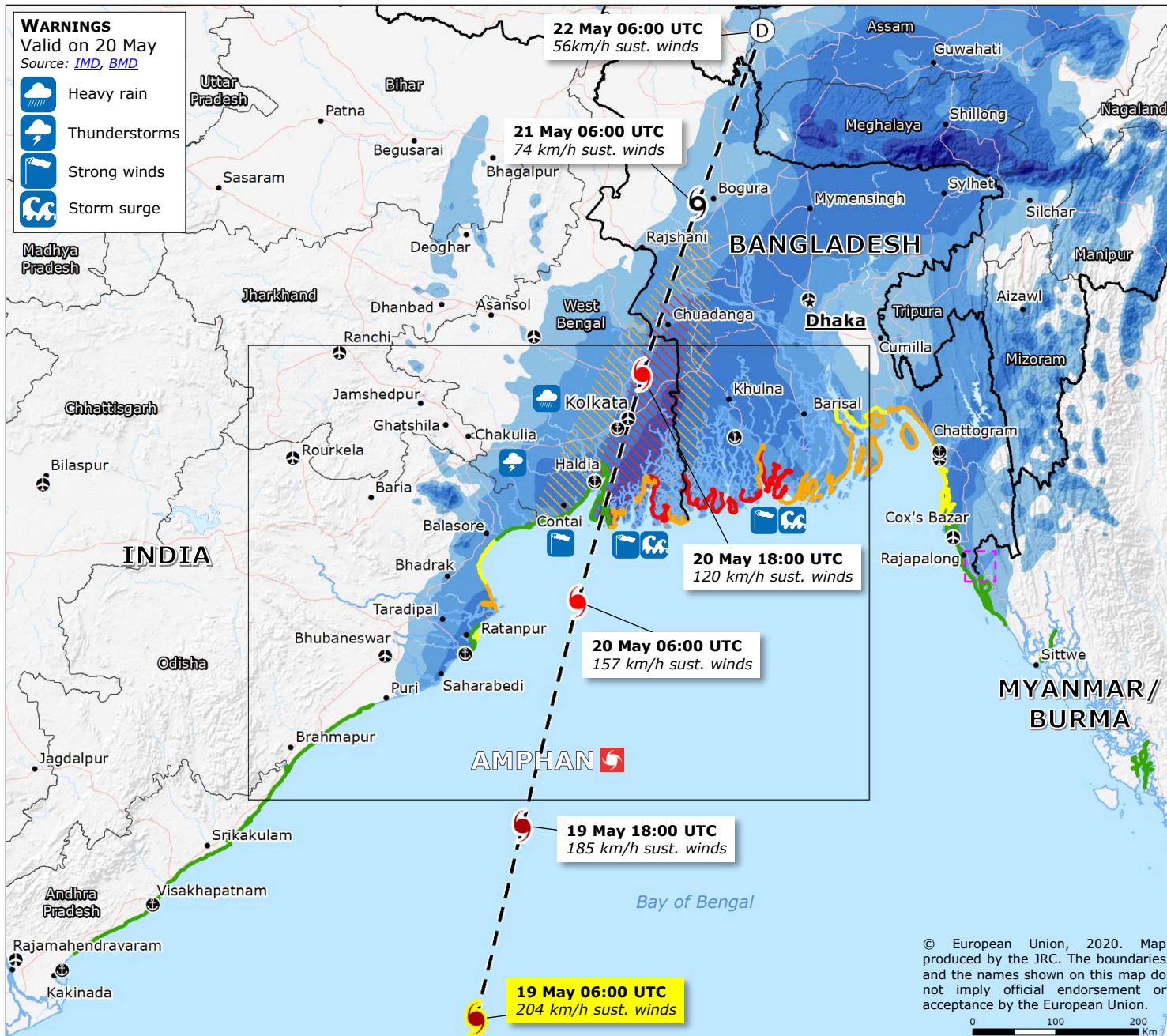


India, Bangladesh | Tropical Cyclone AMPHAN

WARNINGS
Valid on 20 May
Source: [IMD](#), [BMD](#)

- Heavy rain
- Thunderstorms
- Strong winds
- Storm surge



TROPICAL CYCLONE (TC)
Source: [GDACS](#), [JTWC](#)

- Current position
- Past track
- Forecast track

Intensity

- < 63 km/h
- 63-118 km/h
- 119-177 km/h
- ≥ 178 km/h

Wind buffer
Source: [GDACS](#), [JRC](#)

- 93-118 km/h
- > 118 km/h

STORM SURGE
Source: [JRC](#), [NOAA](#), [HWRP](#)

- 0.25-0.5 m
- 0.5-1 m
- 1-2 m
- 2-3 m

5-DAYS RAINFALL FORECAST (mm)
Source: [NOAA](#) [HWRP](#)

- 25-50
- 50-100
- 100-250
- 250-500
- >500

Past TCs

- Fatalities (Source: [EM-DAT](#))
- Country border
- State border (India)
- Main road
- Main port
- Main airport

GDACS Red alert

© European Union, 2020. Map produced by the JRC. The boundaries and the names shown on this map do not imply official endorsement or acceptance by the European Union.