

Philippines, Palau | Tropical Cyclone SURIGAE (Bising)



COMMUNITY ADVISORY

Source: [PAGASA](#)

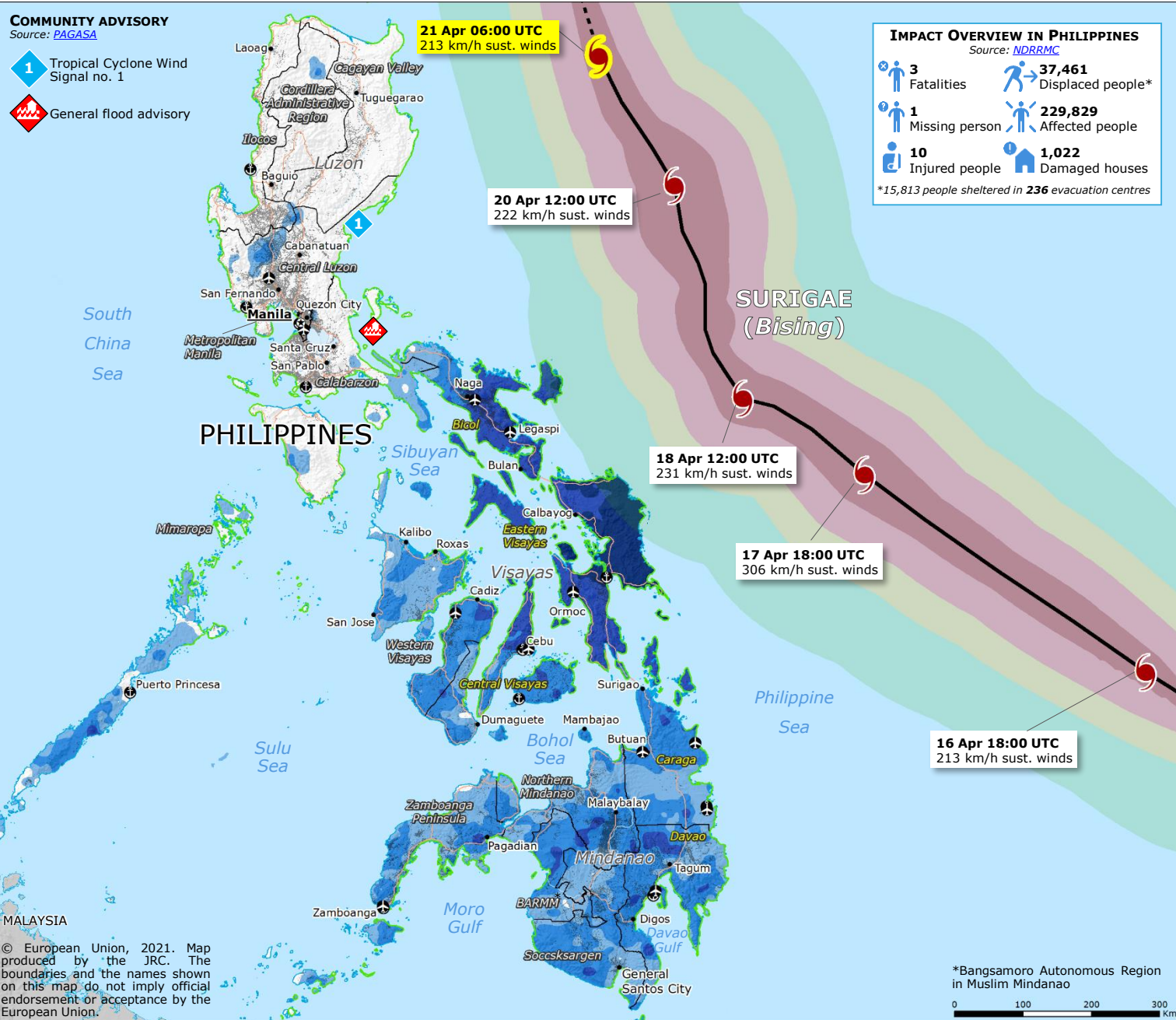
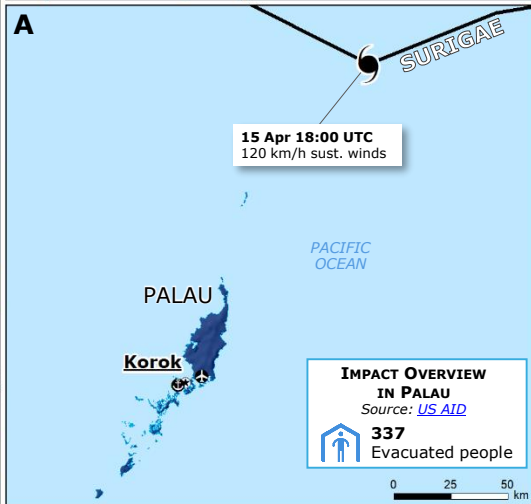
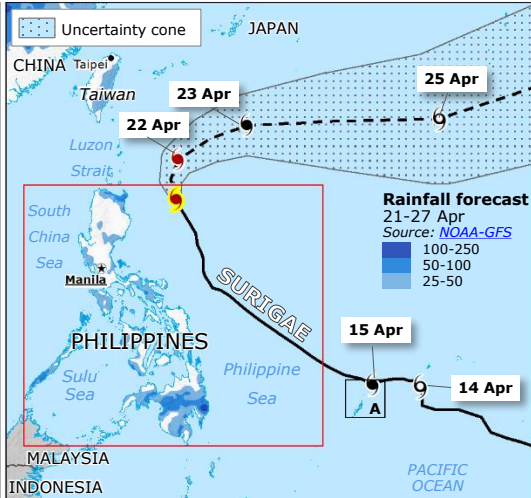
- Tropical Cyclone Wind Signal no. 1
- General flood advisory

IMPACT OVERVIEW IN PHILIPPINES

Source: [NDRRMC](#)

3 Fatalities	37,461 Displaced people*
1 Missing person	229,829 Affected people
10 Injured people	1,022 Damaged houses

*15,813 people sheltered in 236 evacuation centres



Tropical Cyclone

Source: [GDACS, JTWC](#)

- Current position
- Forecast track
- Past track
- 63-118
- 119 - 177
- ≥178 km/h

Rainfall accumulation (mm)

11-20 Apr
Source: [NASA-GPM](#)

- 25-50
- 50-100
- 100-250
- 250-500

Wind buffer (km/h)

Source: [GDACS, JRC](#)

- 63-92
- 93-118
- ≥178

Other Symbols

- Affected region
- Region border
- Built-up area
- Main roads
- Main airport
- Main port

Storm surge 16-21 Apr

Source: [NOAA-HWRF](#)

- <1 m

© European Union, 2021. Map produced by the JRC. The boundaries and the names shown on this map do not imply official endorsement or acceptance by the European Union.

*Bangsamoro Autonomous Region in Muslim Mindanao