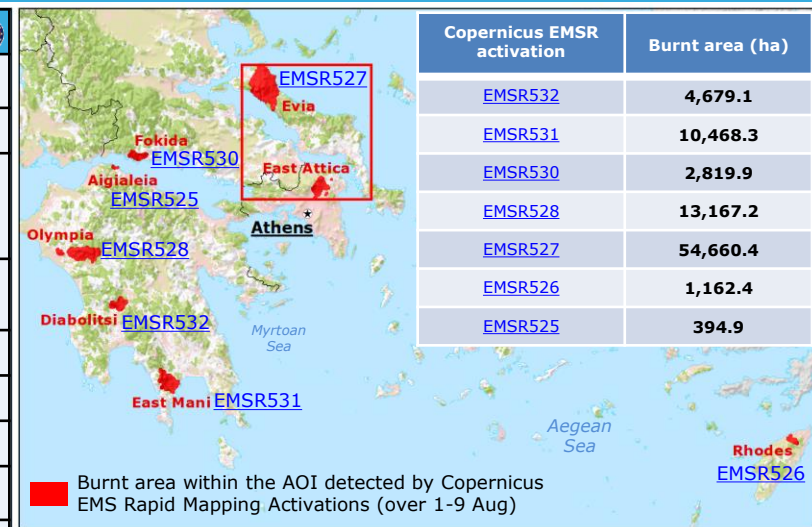


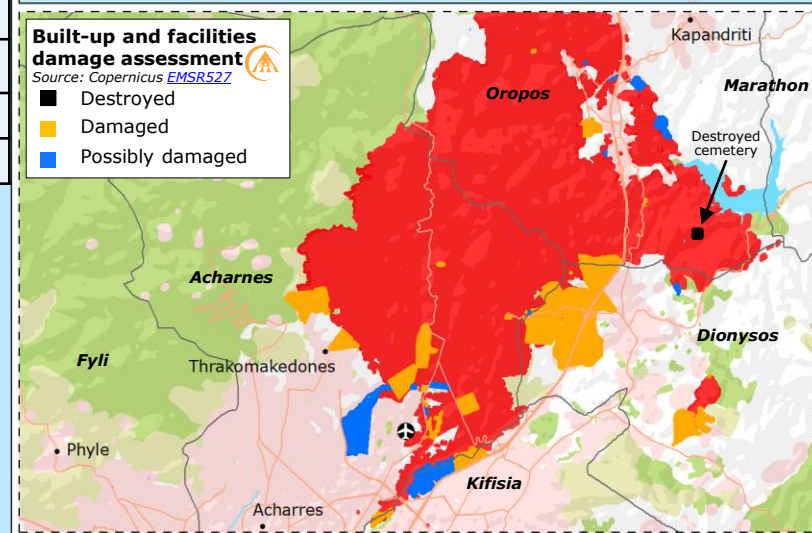
# Greece | Forest fires and EU response



UCPM RESPONSE IN GREECE (3-10 August)	
	<b>2 planes</b> to Peloponnese <b>1 ground firefighting module</b> to Evia
	<b>2 planes</b> via <a href="#">rescEU</a> to north of Athens
	<b>4 ground firefighting modules</b> via <a href="#">ECPP</a> , 1 deployed to Attica, 3 deployed to Peloponnese <b>3 Canadairs</b> to Evia
	<b>1 Canadair</b> via <a href="#">rescEU</a> to Peloponnese
	<b>1 ground firefighting module</b> to Evia
	<b>1 Canadair</b> via <a href="#">rescEU</a> to Peloponnese
	<b>1 ground firefighting module</b> to Peloponnese
	<b>2 ground firefighting modules</b> in transit to GREECE
	<b>1 ground firefighting module</b> to Evia
	<b>1 ground firefighting module</b> in transit to GREECE
	<b>1 ground firefighting module</b> to Evia
	<b>1 ERCC Liaison Officer</b>



Copernicus EMSR activation	Burnt area (ha)
<a href="#">EMSR532</a>	4,679.1
<a href="#">EMSR531</a>	10,468.3
<a href="#">EMSR530</a>	2,819.9
<a href="#">EMSR528</a>	13,167.2
<a href="#">EMSR527</a>	54,660.4
<a href="#">EMSR526</a>	1,162.4
<a href="#">EMSR525</a>	394.9



**Copernicus EMS [EMSR527](#)**

Activation date: 4 August

- Area of Interest
- Burnt area detected by Copernicus EMS Rapid Mapping Activations (as of 9 Aug)
- Active fires (as of 9 Aug)
- Road
- Municipality border
- Region border
- Forest/semi-natural
- Cropland
- Lake
- Built-up  
Source: JRC [GHS-L](#)
- River
- Airport
- Port

© European Union, 2021. Map produced by JRC. The boundaries and the names shown on this map do not imply official endorsement or acceptance by the European Union.