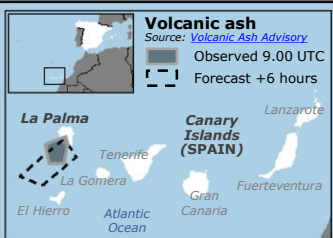


Spain, Canary Islands (La Palma) | Cumbre Vieja volcanic eruption

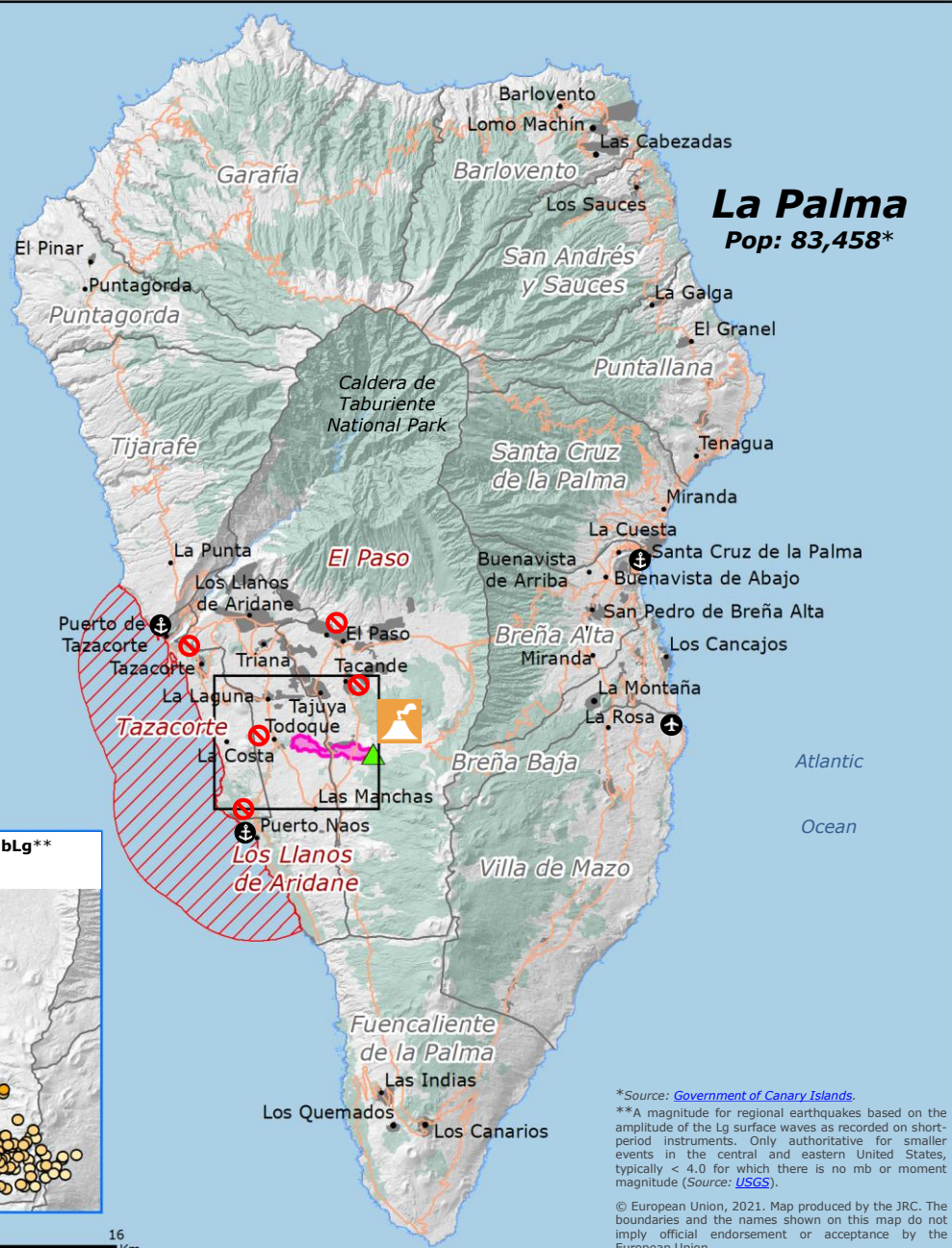


SITUATION OVERVIEW

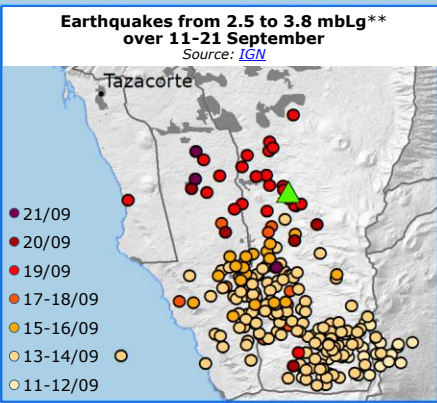
Source: Spanish Civil Protection, IGN as of 21 Sept

19 Sept at 14.10 UTC
Start of the volcanic eruption

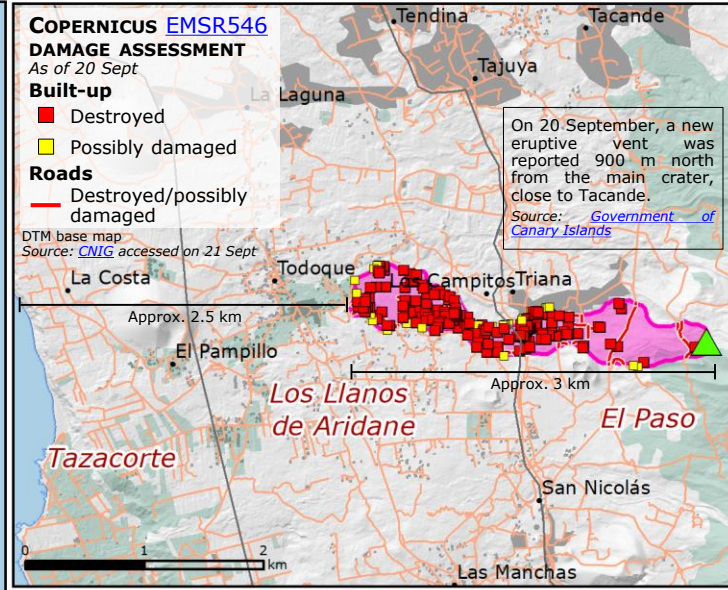
- > 6,000** Evacuated people
- 180** Damaged houses
- Closed roads**
- Interrupted school activities across El Paso, Tazacorte and Los Llanos de Aridane**



La Palma
Pop: 83,458*



*Source: [Government of Canary Islands](#).
**A magnitude for regional earthquakes based on the amplitude of the Lg surface waves as recorded on short-period instruments. Only authoritative for smaller events in the central and eastern United States, typically < 4.0 for which there is no mb or moment magnitude (Source: [USGS](#)).



COPERNICUS EMSR546
DAMAGE ASSESSMENT
As of 20 Sept

Built-up

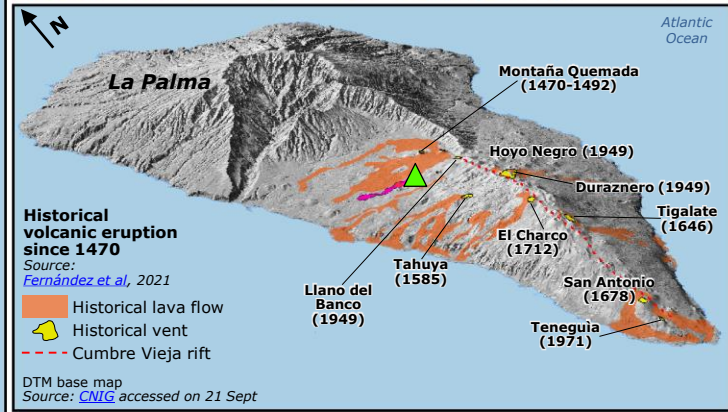
- Destroyed
- Possibly damaged

Roads

- Destroyed/possibly damaged

DTM base map
Source: [CNIG](#) accessed on 21 Sept

On 20 September, a new eruptive vent was reported 900 m north from the main crater, close to Tacande.
Source: [Government of Canary Islands](#)



Historical volcanic eruption since 1470
Source: [Fernández et al, 2021](#)

- Historical lava flow
- Historical vent
- Cumbre Vieja rift

DTM base map
Source: [CNIG](#) accessed on 21 Sept

- Main eruptive vent
 - [GDACS](#) Orange alert
 - Maritime exclusion zone
Source: [Government of Canary Islands](#)
 - Copernicus Activation EMSR546
Activation date: 19 Aug
 - Lava Flow as of 20 Sept at 18:50 UTC
- Name** Municipalities under evacuation order/ emergency declaration
Source: [Riesgo Volcanico La Palma](#)
- Built-up
Source: [CNIG, OSM](#)
 - Natural area/ Natural park
 - Roads
 - Municipality limit
 - Airport
 - Port