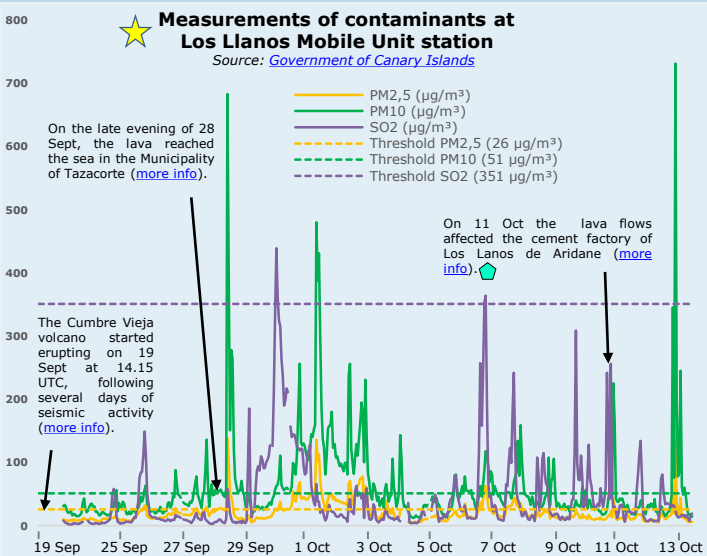
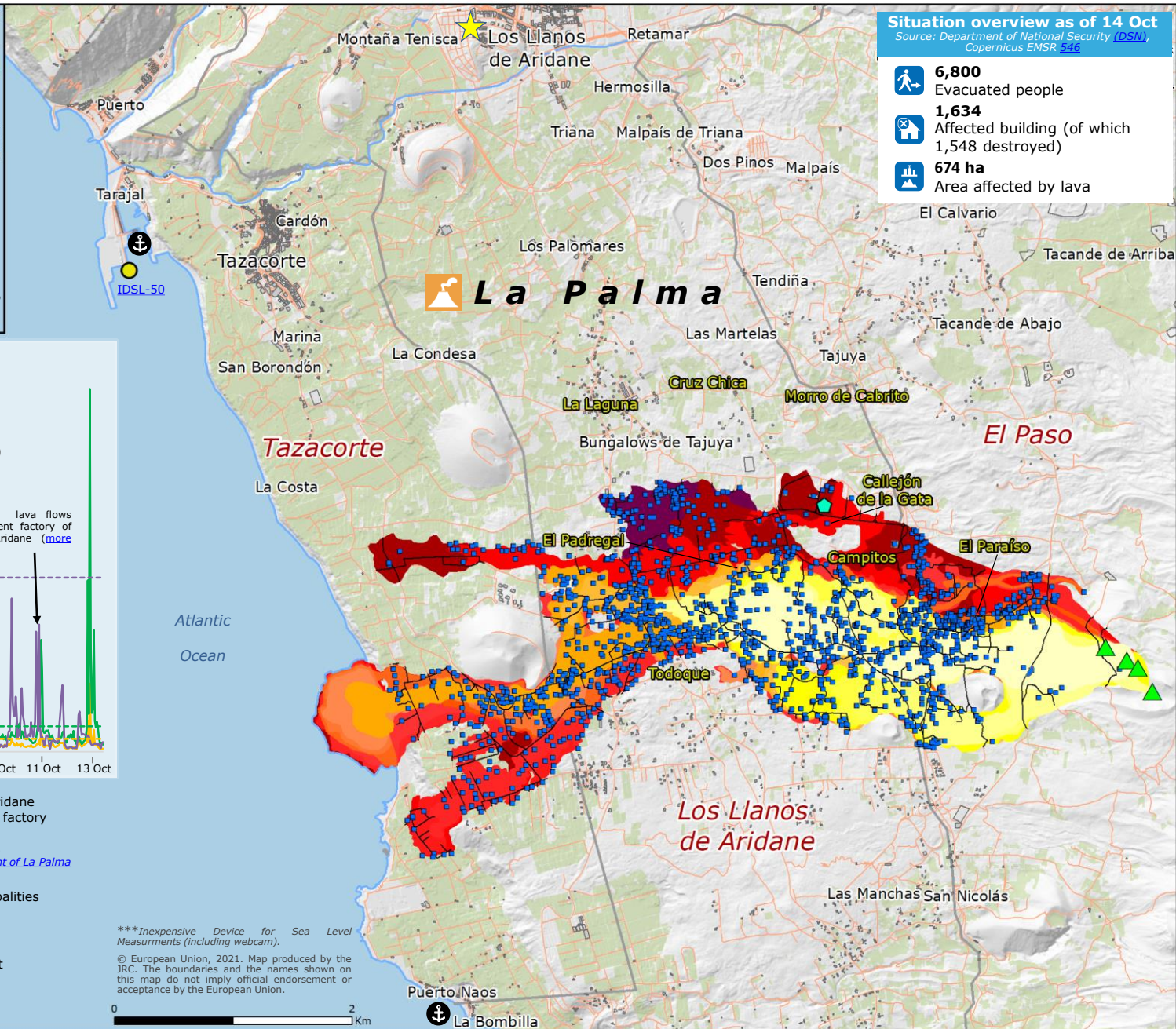
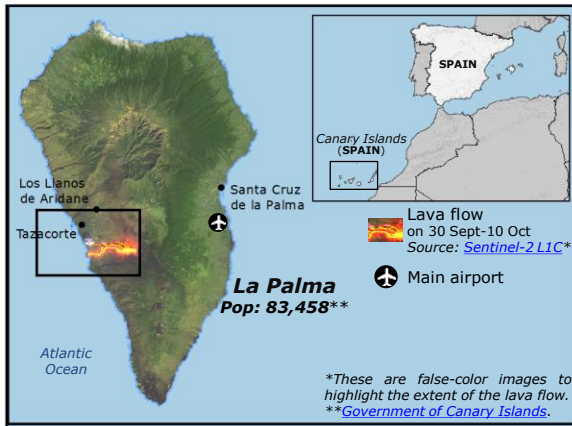


Spain, Canary Islands (La Palma) | Cumbre Vieja volcanic eruption



Situation overview as of 14 Oct
 Source: Department of National Security (DSN), Copernicus EMSR 546

- 6,800** Evacuated people
- 1,634** Affected building (of which 1,548 destroyed)
- 674 ha** Area affected by lava



COPERNICUS EMSR546 DETECTION

- Eruptive vent
- Los Llanos de Aridane affected cement factory
- Lava flow
- Name Evacuated areas
Source: Government of La Palma
- Destroyed/damaged building
- Name Affected municipalities
- Destroyed/damaged roads
- GDACS Orange alert
- Cropland
- Location of the JRC/IGN IDSL***
(to be installed on 20 Oct 2021)
Source: JRC
- Municipality limit
- Port
- Roads

***Inexpensive Device for Sea Level Measurements (including webcam).

© European Union, 2021. Map produced by the JRC. The boundaries and the names shown on this map do not imply official endorsement or acceptance by the European Union.

0 2 Km