

## La Palma IDSL-50 Webcam

Source [JRC-TAD](#)



La Costa



Image as of 23 November at 10.15 UTC\*\*

\*\*This frame illustrates the precise moment when the lava enters the water at La Costa area. The plume is the result of sea water evaporation due to contact with the lava.

© European Union, 2021. Map produced by the JRC. The boundaries and the names shown on this map do not imply official endorsement or acceptance by the European Union.

## Situation overview as of 2 Dec

Source: [CENEM](#), [Copernicus EMSR 546](#)

- 7,250** Evacuated people
- 542** Sheltered people
- 2,891** Affected buildings (of which 2,790 destroyed)
- ≈1,164 ha** Area affected by lava

## COPERNICUS EMSR546

### ACTIVATION

- Recent eruptive vent As of 1 December
- Past eruptive vent Since 19 September

- ### Lava flow (Date)
- 19-26 Sep
  - 27 Sep-3 Oct
  - 4-10 Oct
  - 11-17 Oct
  - 18-24 Oct
  - 25-31 Oct
  - 1-7 Nov
  - 8-14 Nov
  - 15-21 Nov
  - 22-28 Nov
  - 29 Nov-2 Dec

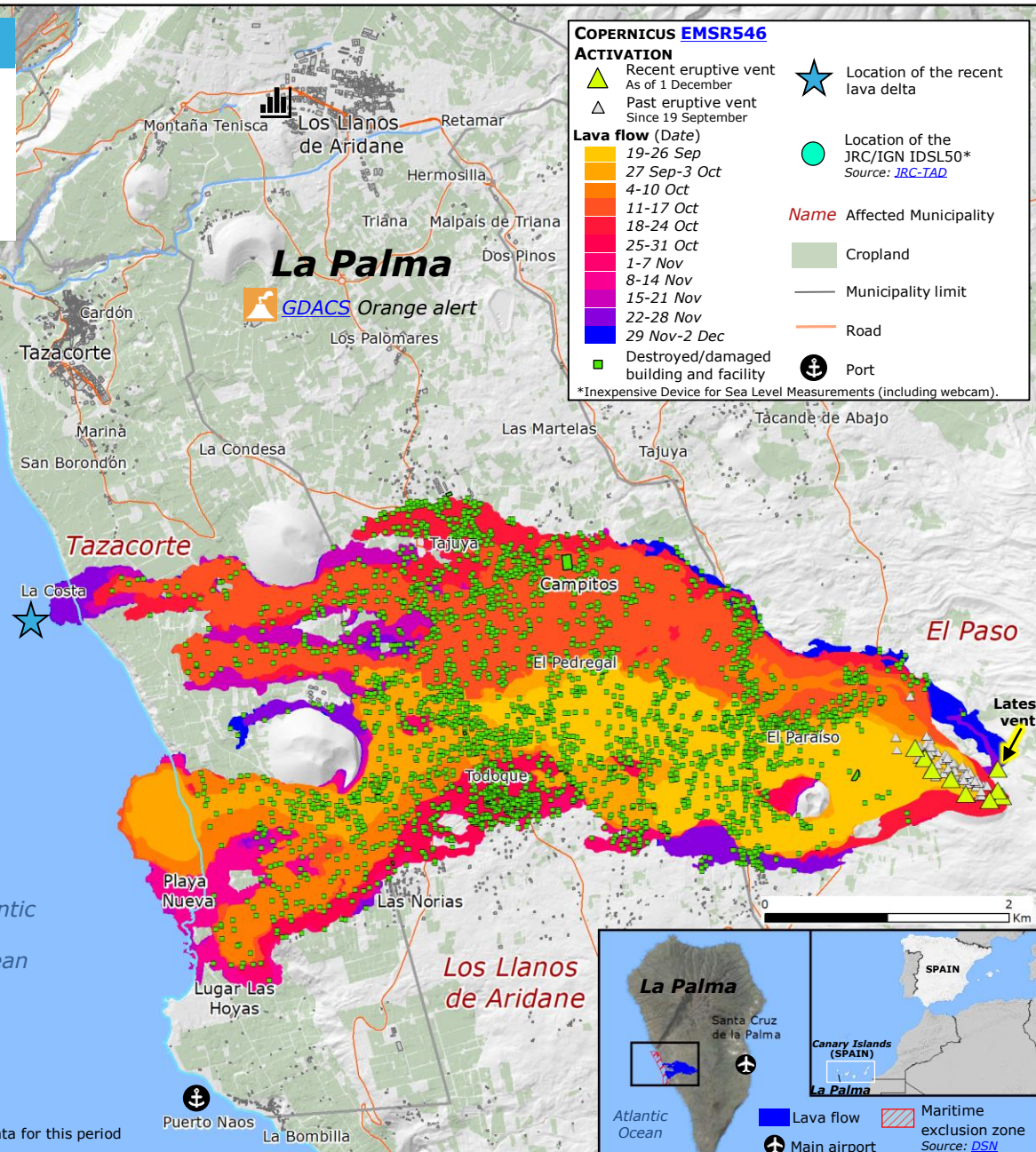
- Location of the recent lava delta

- Location of the JRC/IGN IDSL50\*  
Source: [JRC-TAD](#)

Name Affected Municipality

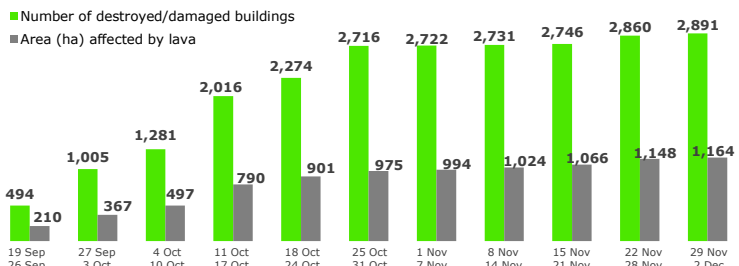
- Cropland
- Municipality limit
- Road
- Port

\*Inexpensive Device for Sea Level Measurements (including webcam).



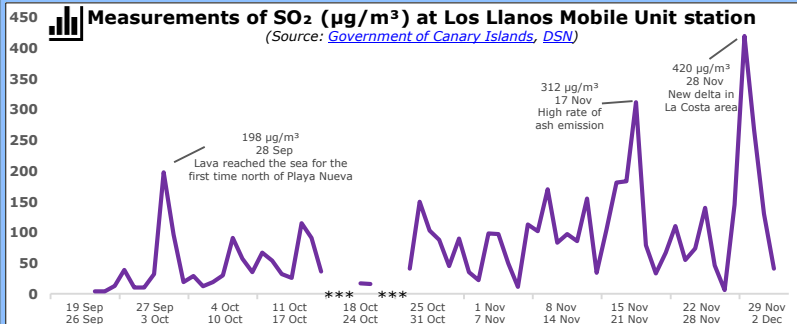
## Damage assessment per week since 19 Sep

(Source: [Copernicus EMSR546](#))



## Measurements of SO<sub>2</sub> (µg/m<sup>3</sup>) at Los Llanos Mobile Unit station

(Source: [Government of Canary Islands, DSN](#))



\*\*\*No data for this period

